



S SMART
software

SMART*control room*

Operating Manual

Version 8.x

1	GENERAL INFORMATION	4
2	SYSTEM REQUIREMENTS	5
3	INSTALLATION.....	6
3.1	Installing the Plug-ins on the Milestone Xprotect® Server	6
3.2	Installing the Plug-ins on the Smart Client PC's	9
4	CONFIGURATION OF THE CONTROL ROOM	12
4.1	Configuration of the Smart Control Room Client Plug-In.....	12
4.1.1	Preparing the configuration	12
4.1.2	Create a new view	13
4.1.3	Placing content into the fields.....	14
4.1.4	Configuration Window of Smart Control Room	15
4.1.5	Monitor Configuration	16
4.1.6	Add Control Room Background Images / Maps	19
4.1.7	Placing hardware and events on the map	20
4.1.8	Creating Viewpoints	22
4.1.9	Creating Scenarios	24
4.1.10	Configuration window after completing the setup	26
4.2	Configuration of the Smart Control Room Alarm Plug-In.....	27
4.2.1	Preparing the configuration	27
4.2.2	Positioning of the alarm list	28
4.2.3	Configuration window of Smart Alarm	29
4.3	Configuration of the interaction of the Plug-Ins	30
4.3.1	Connect the Alarms to Smart Control Room Client interface	30
4.3.2	Create Alarm Views / Alarm Scenarios.....	31
4.3.3	Finishing the configuration.....	32
4.4	Configuration of the Smart X-Display.....	33
4.5	Configuration of the Smart RC Smart Client Plugin.....	34
5	CONFIGURATION MIGRATION FROM SMART MAP/SMART ALARM TO THE CONTROL ROOM CLIENT PLUGIN.....	35
5.1	Difference between ER Smart Map, ER Smart Alarm and the new Control Room Client	35
5.2	Update Procedure.....	35

6	USING THE SMART PLUG-INS	36
6.1	Using Smart Control Room Client.....	36
6.1.1	Smart Map Status indication using Xprotect® Advanced VMS (C-Code based):.....	37
6.1.2	Local System Monitors	38
6.1.3	Smart X-Display	38
6.1.4	Smart RC.....	39
7	USING SMART CONTROL ROOM ALARM.....	40
7.1.1	Alarm Pop- up	40
7.1.2	Alarmlist	42
7.1.3	Multiple Camera and Monitor Alarm Scenario	43
7.1.4	Direct playback of alarm clips / Playback Window.....	44
7.1.5	Direct playback of alarm clips / Smart Client Browse Mode	45

1 General Information

This Operating Manual describes the installation and the configuration of the Smart Plug-Ins for the Milestone Smart Client. The Smart Client is used by Milestone Xprotect® video surveillance systems from Milestone.

The Plug-Ins described in this manual add more functionality to the surveillance system, which results in a better usability, faster reaction and better overall security of the solution.

Since Version 2.0 of the Plug-ins, there are a lot of new functions to Control Live Video on different Monitors.

With Version 6.0 the Plugin architecture has been changed and enhanced by many new features

This Operating Manual includes also a description on how to configure the Smart X-Display Application or Smart RC (Smart Client Remote Control Plug-In) for visualizing the live videos on Remote Displays.



Please read this manual carefully to take advantage of the full functionality and to secure a safe operation.

2 System Requirements

Table 2-1: System requirements *

Hardware:	
The same minimal requirements used for the Smart Client from Milestone will be needed. (See System Requirements Milestone Smart Client)	
Software:	
Also the system configuration is basically the same as for the Milestone Smart Client. Additionally the following points are required:	
Milestone Smart Client Version:	Minimum 2019 R2 Recommended 2020 R1 or higher (Contact us when you need the Plug-ins for an older Smart Client for some reason)
Milestone Xprotect® Version:	C-Code VMS Recommended Minimum Express + or higher
Time synchronisation	To make sure the Smart Alarm Plug-in works correctly, the time and date of the Milestone server must to be synchronised with the Client PC's.

Please refer to the Smart Client manual for other system requirements.

(*subjects to change without notice)

3 Installation

The installation of the Plug-ins is simple and the following chapter explains the necessary steps. The installation will be done in two steps. First the Plug-ins will be placed on the server to make them available for the clients. As a second step the Plug-ins must be installed on the client site. This installation process is the same for all Smart Plug-ins.

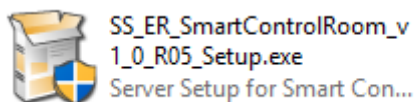
The following Installation example is based on the Smart Control Room, which installs all Plugins and Applications. It also adds all Licenses for additional features (e.g. Smart X-Display, Smart RC).

3.1 Installing the Plug-ins on the Milestone Xprotect® Server

The following steps are needed to install the Plug-ins on the server to make them available for download using the web server. Additionally the Plug-ins will be registered on the server.

The following information's are needed:

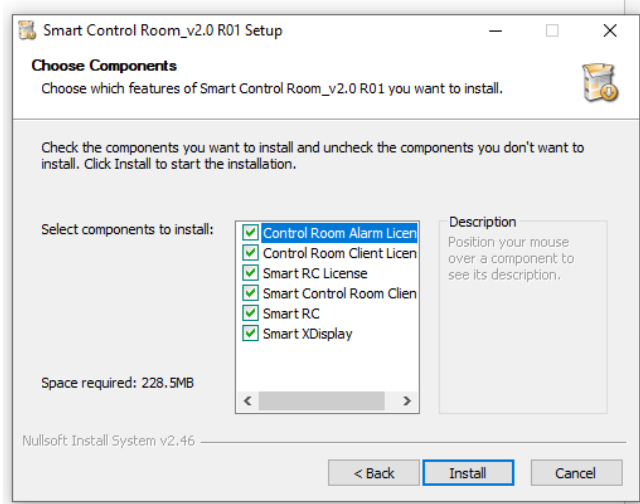
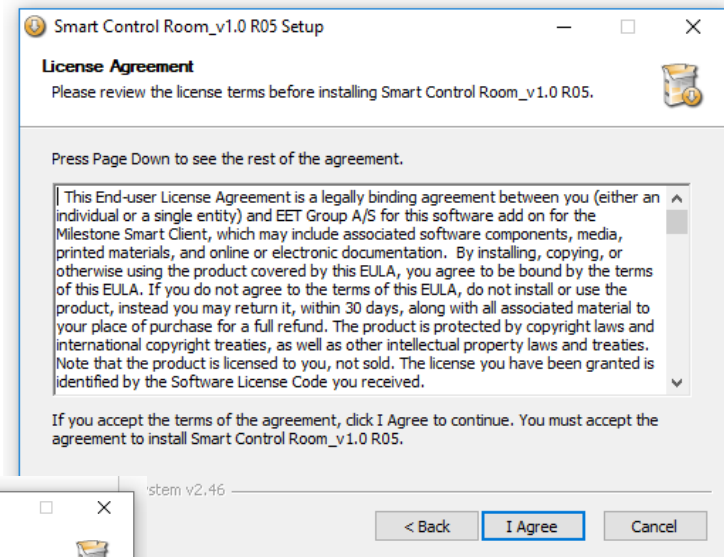
- The License code which you obtained from your partner. (*)
- The additional License File
- The Setup File for the server side installation



(*) Please contact us if you don't have a license file by the time you like to install the Plug-ins

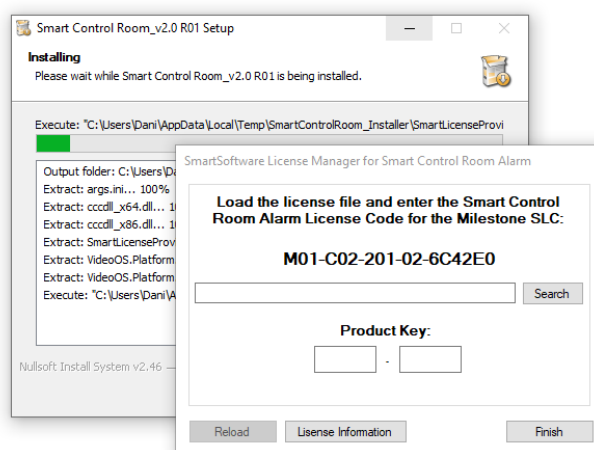
The Assistant will guide you through the necessary Steps. Close all application and press next.

Before you continue with the installation read the License Agreement carefully and cancel the installation if you don't accept it. Otherwise press I Agree and continue.

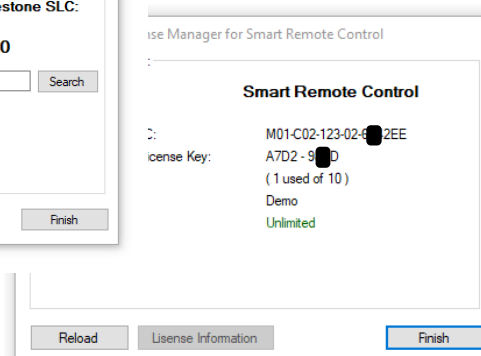


The Wizard let you install all necessary Licenses and Features.

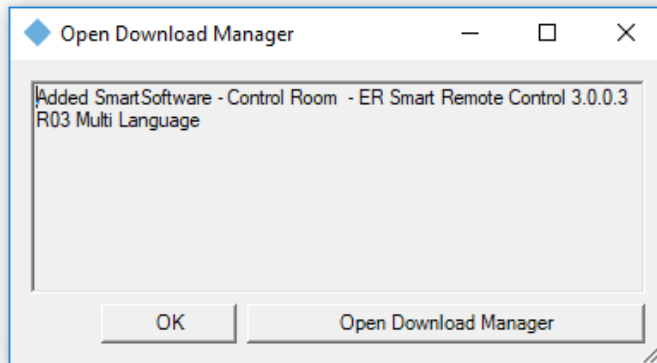
Select the desired Options and press Install to continue.



Follow the instructions to load and install the licenses for all components.



After you successfully loaded the licenses, the installer begins to add all components to the download Manager.



The installation wizard will automatically add the Smart Plug-in to the Milestone's Download Manager.

Press "OK" to finish the Installation or Open the Download Manager for further Configurations.

Note: The Download Manager Window will not be shown on all Milestone Xprotect® Versions.

The Plug-in was successfully installed on the server and the installation can be terminated by pressing Finish.



After the installation the Plug-in is ready to be installed on the clients. The following chapter covers the installation on the client.

Remark:

The Plug-ins are mainly installed on the server to allow the download from the clients. However additionally parts of the licence data's which the server needs will be installed. Therefore an installation on the server is necessary.

If you perform the installation which the following chapter describes without server setup, the Plug-ins will not work correctly because of missing information's.

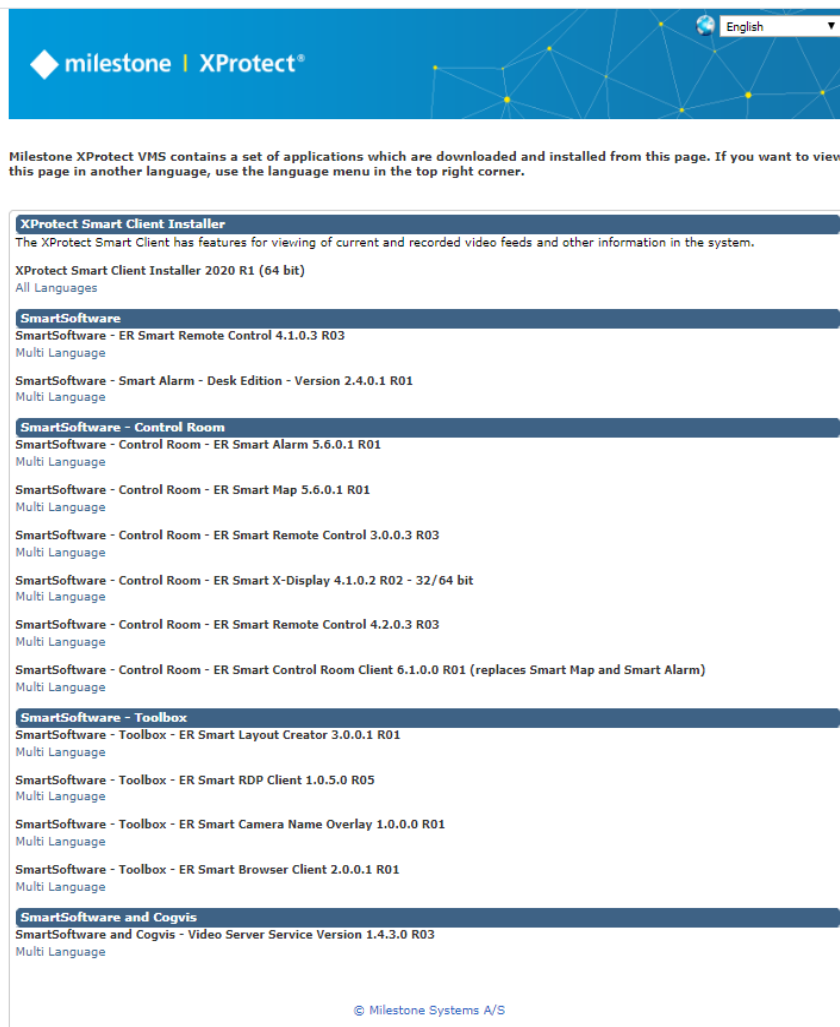
If the Milestone Server was upgraded, it may be necessary to install the Plug-ins again on the server!

3.2 Installing the Plug-ins on the Smart Client PC's

After successfully installing the Plug-ins on the server, the client setup can be downloaded. The following procedure is necessary:

Open your Web browser and connect to the Milestone Enterprise, Professional or Corporate Management server using the specific URL:

(To get the Plug-ins from the Corporate Management Server, you must enter the specified installation URL for example:
<http://localhost/Installation>)



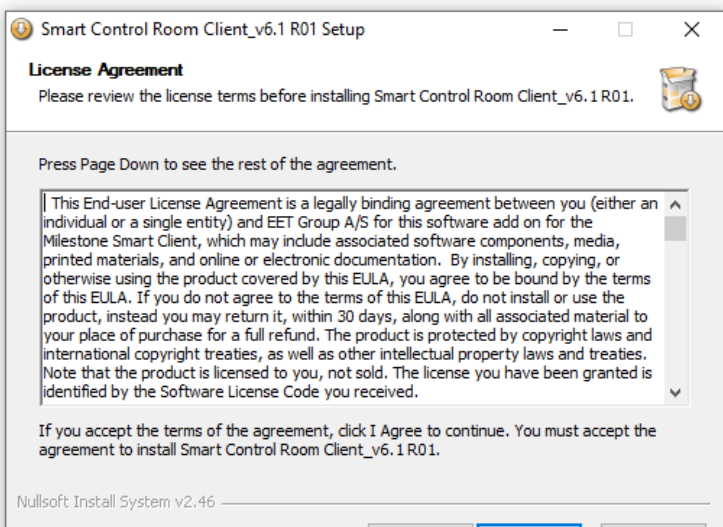
Click on the link under the "SmartSoftware – Control Room" group to install the Plug-in(s) on the client.

Since Version 6.x the both Plug-ins "ER Smart Map" and "ER Smart Alarm" was changed and combined into one new Plugin ER Smart Control Room Client.

If you are in an upgrade procedure, you need to follow the procedure described in the next chapters.

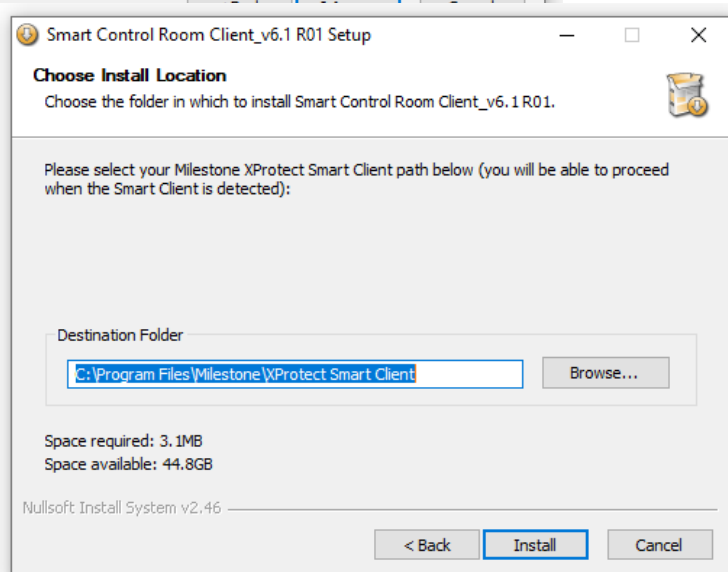


The installation assistant will guide you through the installation process.
Close all active application and press ,Next >’.



Before you continue with the installation read the License Agreement carefully and cancel the installation if you don't accept it.

Otherwise press I Agree for continue.

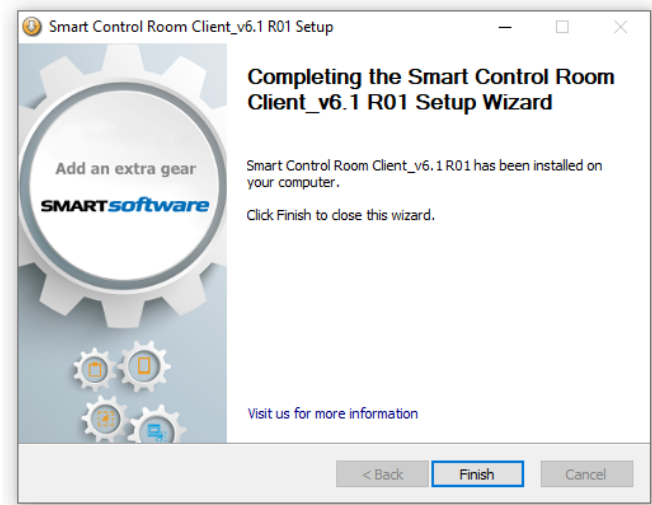


The installation routine searches for the Milestone Smart Client folder.

The installation can only be done if the Smart Client is found.
If the setup software does not succeed to find an installation, it is possible to search the installation path manually using the browse button.

Press ,Install’ to continue with the installation.

The Plugin was successfully installed on the client. The installation process can now be terminated by pressing 'Finish'.



The Plugin was successfully installed and will be available with the next start of the Smart Client.

Thanks to advanced technologies the integration of the Plug-In into the Smart Client is seamless. The following chapters will cover the configuration and functionality of the Smart Control Room Client and Smart Control Room Alarm Plug-ins.

4 Configuration of the Control Room

The following chapters introduce you to the configuration of Smart Control Room Alarm and Smart Control Room Client. Please read them carefully to make sure using the whole functionality of those Plug-ins.

If you are upgrading from a previous ER Smart Map and ER Smart Alarm please read Chapter 5 [Configuration migration from Smart Map/Smart Alarm to the Control Room Client Plug-in](#)

4.1 Configuration of the Smart Control Room Client Plug-In

The following chapter provides a step by step guide how to configure the Smart Control Room Client Plug-in (ER Smart Map before Version 6.x).

4.1.1 Preparing the configuration

Before you start with the configuration you have to prepare the following:

Maps or Background images to be integrated:

The Maps or Control Background images can be custom made and in different formats (*.jpg, *.bmp, *.gif, *.png, etc.). To optimize the performance it makes sense to use a proper compression. The Smart Control Room Client Plug-in can work with any resolution of the image, however it is recommended to scale the image to a useful size.

Prepare a list with the following data:

- Name and position of the Installed cameras
- Cameras and presets which you would like to gather in a viewpoint
- Outputs (I/O Output Events) which are configured in the Milestone System
- Events (Manual or custom Events)
- Inputs (I/O Events, VMD Events or Alerts in Corporate) which are configured in the Milestone System

Eventually configure the Preset positions of the dome cameras.

Eventually prepare custom Icons for all kind of items on the interface (Cameras, Outputs, Events and Alarms)

If you use Smart X-Display or Smart RC you should prepare a list with the connection data for each Monitor:

- Monitor Name
- Monitor IP-Address
- Monitor Port

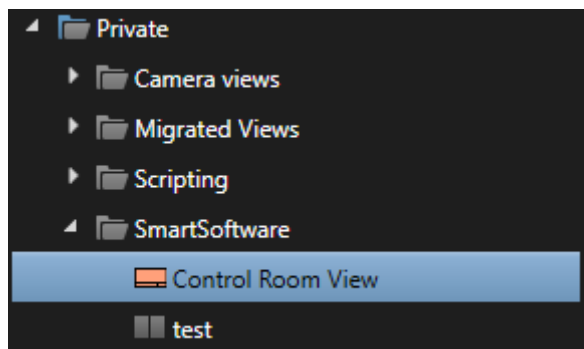
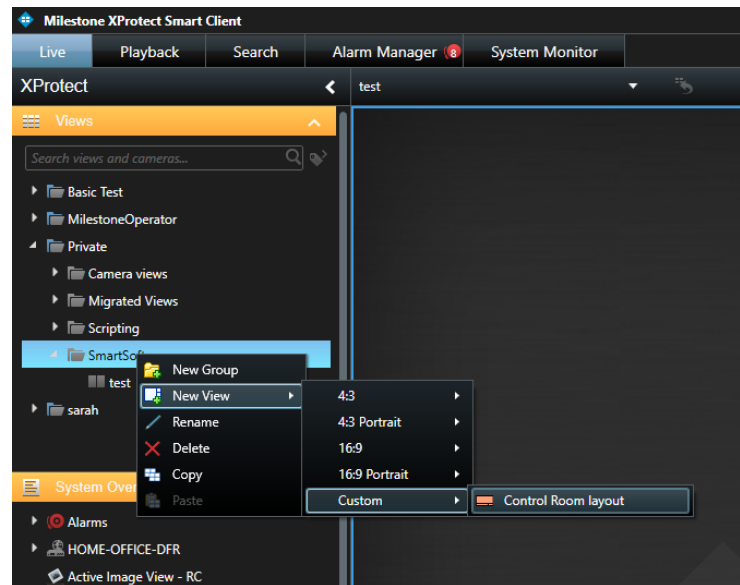
4.1.2 Create a new view

Once all information's are ready you can start the configuration procedure, using the following guideline:

Launch the Smart Client, log in with "Milestone – Administration" rights to create new views and change to the setup mode.

You can either create a private or a shared view.

NOTE: Make sure the map images are in the same path on all clients or use a network path.



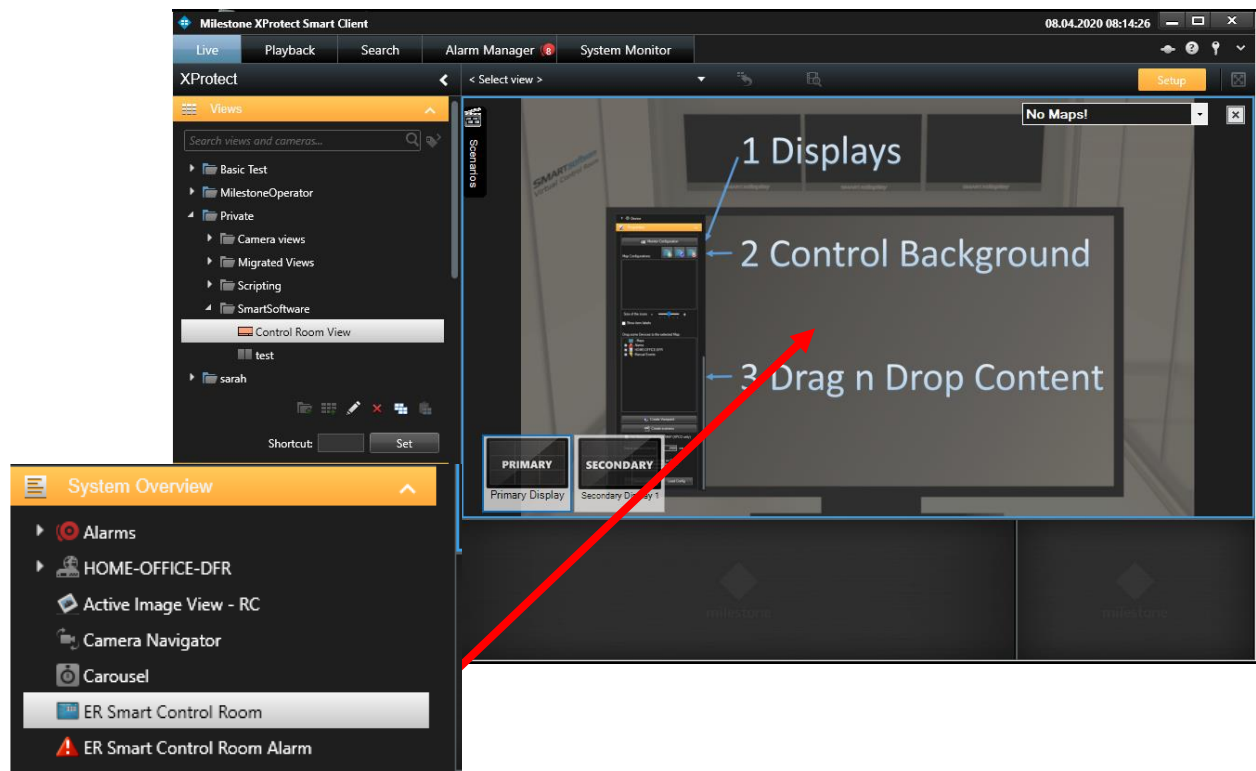
A new layout „Control Room layout“, which is optimized for the use with the two Plug-ins, is available. However, any layout can be used.

Name the new view by clicking on the entry or by using the rename button.

It is recommended to only have one Control Room View per Smart Client running. Therefore create the View either in the Private Group for each User or in a Public Group if the User interface must be shared.

4.1.3 Placing content into the fields

You are now ready to place content into the available fields. The following setup is recommended:



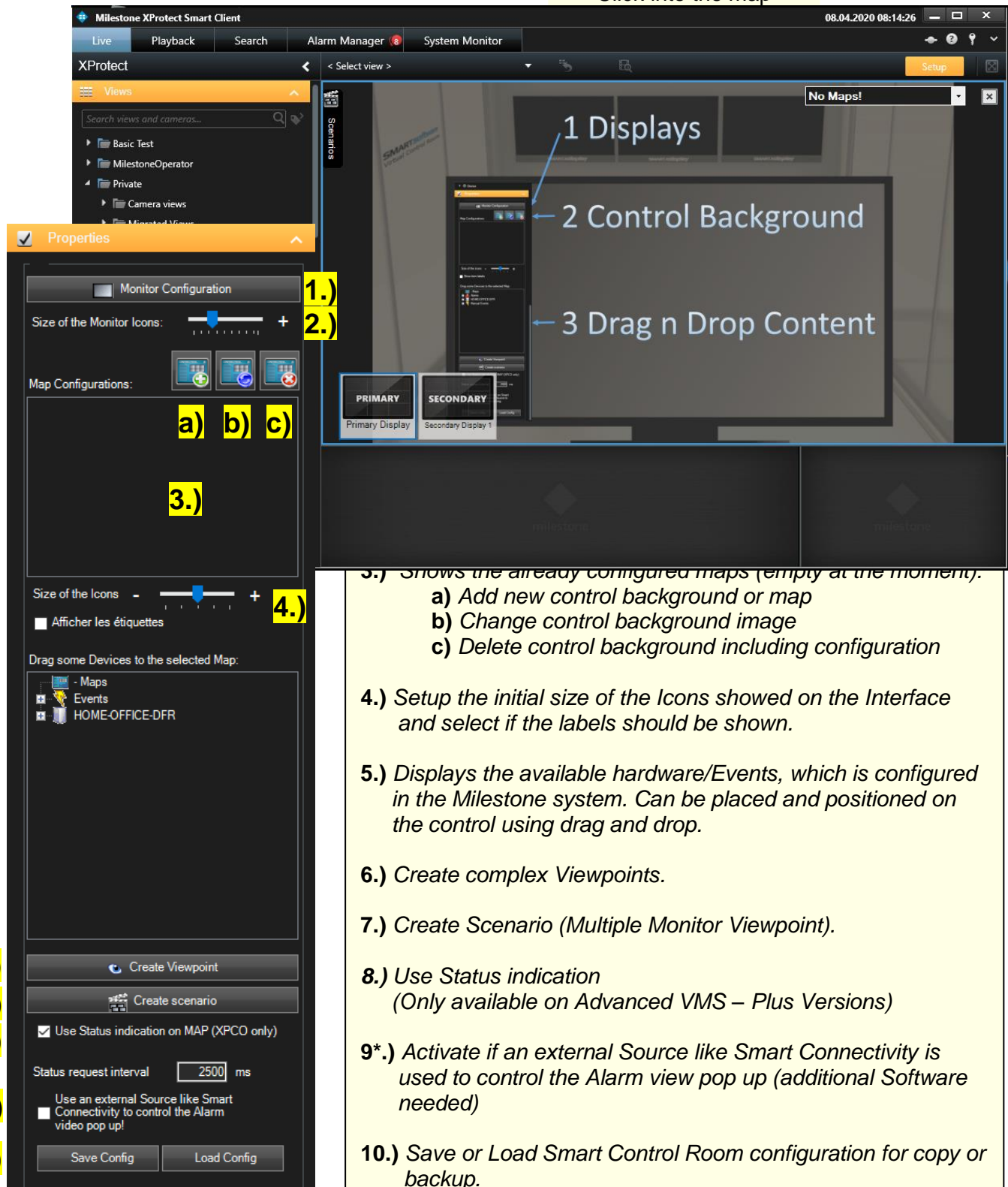
As you can see above the Smart Map will be dragged and dropped into the main quad. Into the small field on the bottom right a Hot Spot is recommended, this Hotspot can be used to control Dome cameras, after they are selected.

The field on the bottom will be used later for the Smart Control Room Alarm Plug-in. If only the Map Plug is installed another Layout can be used.

4.1.4 Configuration Window of Smart Control Room

There are different configuration and adjustments possible in the Smart Control Room Client interface. The operating panel 'Smart Control Properties' appears upon clicking into the map window.

Click into the map



1.)

2.)

a) b) c)

3.)

4.)

5.) Shows the already configured maps (empty at the moment).

a) Add new control background or map

b) Change control background image

c) Delete control background including configuration

4.) Setup the initial size of the Icons showed on the Interface and select if the labels should be shown.

5.) Displays the available hardware/Events, which is configured in the Milestone system. Can be placed and positioned on the control using drag and drop.

6.) Create complex Viewpoints.

7.) Create Scenario (Multiple Monitor Viewpoint).

8.) Use Status indication
(Only available on Advanced VMS – Plus Versions)

9*) Activate if an external Source like Smart Connectivity is used to control the Alarm view pop up (additional Software needed)

10.) Save or Load Smart Control Room configuration for copy or backup.

4.1.5 Monitor Configuration

First of all, you should setup your Monitors.




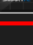
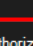
Since Smart Map Version 2.0 and higher, there are different Monitor types available, which allow a full flexible control of the live video.

Monitor Type:	Description:	License:
Primary	<p>The Primary System Monitor, connected to the local PC.</p> <p>Configuration: Automatic with the "Search System Screens" function.</p> <p>Layouts: There can be used all available Milestone Smart Client View Layouts. (Contact us on dfr@smartsoftware.shop to ask for more customized view Plug-Ins)</p>	<i>Incl. in Smart Control Room base License</i>
Secondary	An extended System Monitor, connected to the local PC with the same options as the Primary System Monitor.	<i>Incl. in Smart Control Room base License</i>
Smart_X_Display	<p>Smart X-Display can be located everywhere on your Network.</p> <p>Configuration: Manual configuration → SmartMap: Monitor connection settings → Smart X-Display: Milestone Image Server settings</p> <p>Layouts: There are many different Layouts integrated in the Smart X-Display Application.</p>	<p>3 Licenses included in Control Room</p> <p>10 Licenses included in Control Room prime</p> <p>Additional Licenses upon request</p>

Smart RC	<p>Smart RC is a MIP Plugin for the Smart Client which enables a complete remote control of the application. The functionality is similar to the X-Display.</p> <p>Configuration: Manual configuration → SmartMap: Monitor connection settings → Smart RC: Port Settings under the Smart Client options SmartRC</p> <p>Layouts: There can be used all available Milestone Smart Client View Layouts. (Contact us on df@smartsoftware.shop to ask for more customized view Plug-Ins)</p>	<p><i>3 Licenses included in Control Room</i></p> <p><i>10 Licenses included in Control Room prime</i></p> <p><i>Additional Licenses upon request</i></p>
----------	--	--

Click the "Monitor Configuration" button to open the configuration Window:

Monitor Configuration

	Name:	Type:	Index: (Row)	Index: (Column)	Global Visible	Local activated
	Monitor 1	Primary	0	0	<input type="checkbox"/>	<input checked="" type="checkbox"/>
	Monitor 2	Secondary	0	0	<input checked="" type="checkbox"/>	<input checked="" type="checkbox"/>
	X-Display 1	Smart_X_Display	0	0	<input checked="" type="checkbox"/>	<input checked="" type="checkbox"/>
	X-Display 2	Smart_X_Display	0	0	<input checked="" type="checkbox"/>	<input checked="" type="checkbox"/>
	RC Display	Smart_X_Display	0	0	<input checked="" type="checkbox"/>	<input checked="" type="checkbox"/>

1.) 2.) 3.)

☐ Hide unauthorized Monitors 4.) ☒ Allow Window relocation
☐ Show Monitors always

Search System Screens

Smart RC / Smart X-Display:

☐ Is Smart RC /not Smart X-Display
 Name: X-Display 1 Smart X-Display IP: 192.168.11.10 Port: 19771 Row: 0 Column: 0
 Index: 0 0

☒ Full Screen ☒ Show Header Playback last 0 sec. [0 = disabled]
☒ Switch Application Border ☒ Show Camera Name ☐ Audio On/Off
☒ Keep Aspect 5.) ☒ Show Indicator ☒ Show FPS

Change selected Add new Monitor

SmartX-Display Licenses: 8 free (2 used / 10)

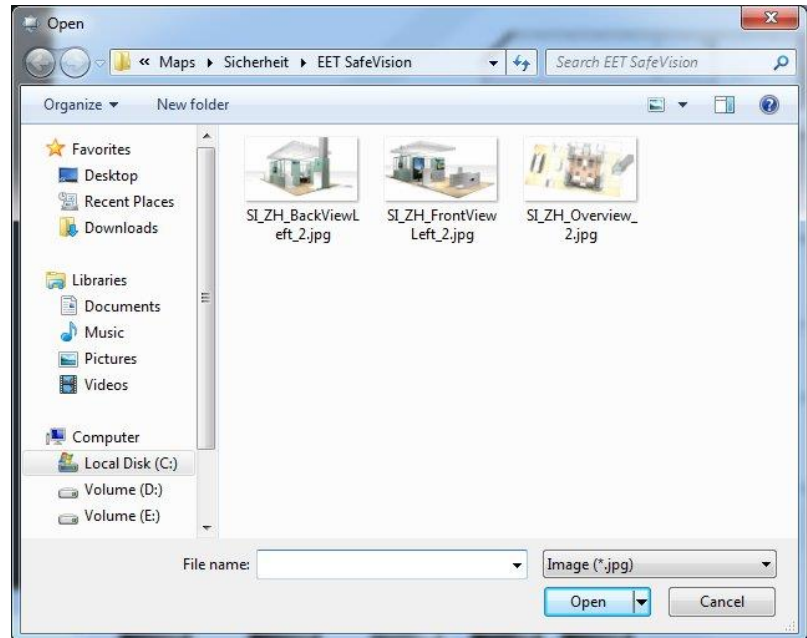
Cancel OK

1.)	In the above screen shot you can see a possible configuration with different Monitors. Field "1.)" Shows the type and the name of the configured Monitor.
2.)	The position index of the Monitor in the GUI bar (Row and Column starting at 0).
3.)	a.) Global Visibility of the Monitor in the GUI bar. If this is unchecked, the Monitor will not be shown in the GUI bar. The Monitor can still be controlled over the context menu of a camera or a Viewpoint, as well as from manual- or alarm Scenarios. b.) Local activated – Use this option if you don't want to have control over this Monitor from this Client. → This overrides the Global Visibility and the monitor is not shown and have no functionality on this respective Client. This can be useful when the Monitor is own by another operator and should not been controlled from another side.
4.)	General Monitor Toolbar behaviour → Hide the unauthorized Monitors (this can be set on X-Display or Smart RC side) → Allow Monitor relocation (Move Monitor Toolbar Window by Drag n Drop) → Show Monitors always (Show Window even when not Control Room View is Shown)
5.)	Smart X-Display / Smart RC configuration: Enter the Name, IP-Address and port number of your Smart X-Display application. Enable/Disable different functions available through the Context Menu. To add a new Monitor of this type, there must be at least one free Video Wall License.

After pressing the "OK" button, the monitors will be available for use and the licenses will be upgraded.

4.1.6 Add Control Room Background Images / Maps

By clicking on **2 a.)** A new interface Background can be chosen using the browse function. Please adjust the data type which was used to create and store the image.

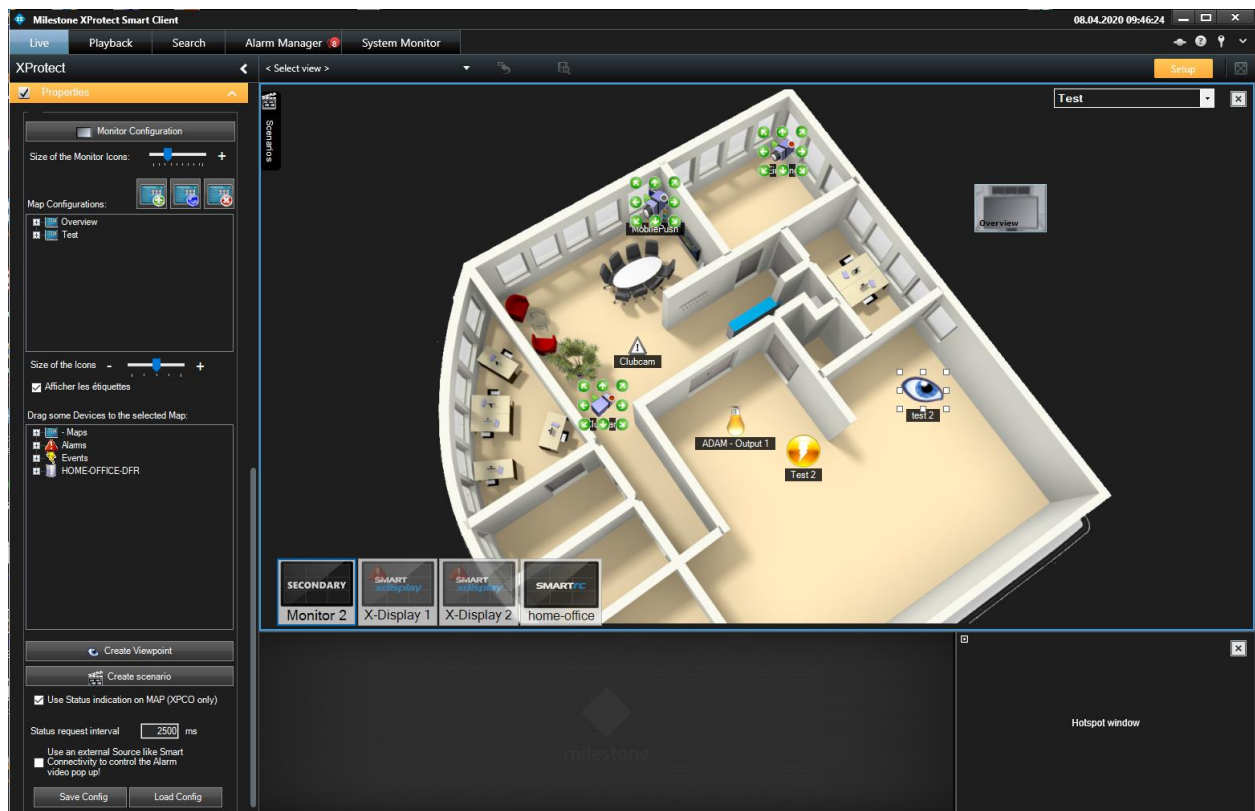


After opening the image the Background Image appears in the map field. The name can be changed if necessary. This can be done by simply clicking on the entry **1.)** Map Configurations'.

The new added floor plan is also available on the Device tree **4.)** To add it as an interactive link to the map.

4.1.7 Placing hardware and events on the map

After adding a floor plan the needed hardware can be placed on the map by drag and drop from **4.**). Available are all configured maps, cameras, contact outputs and Manual or custom Events which have been setup in the Milestone system. Alarm inputs will be available after configuring Smart Control Room Alarm.



Cameras etc. which will be placed on the map, disappear from the tree **3)** to avoid a double use. However for other maps they are still available.

The system recognizes automatically if a dome- or a fix camera is placed on the map and chooses the specific symbol which will be used.

The direction of a fix camera faces can be adjusted.

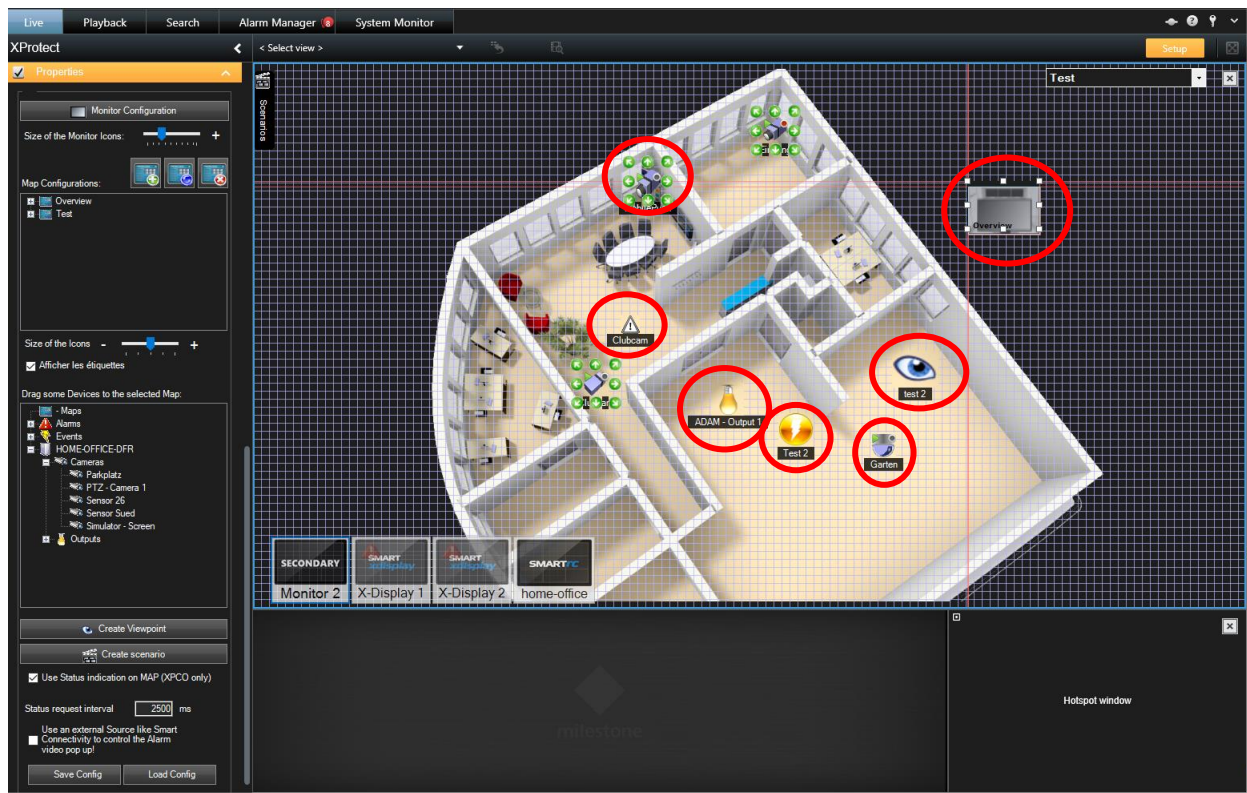


Since Version 3.0, custom Icons are available through the context menu. It is possible to change the icon individually for each item on the Map as well its size.



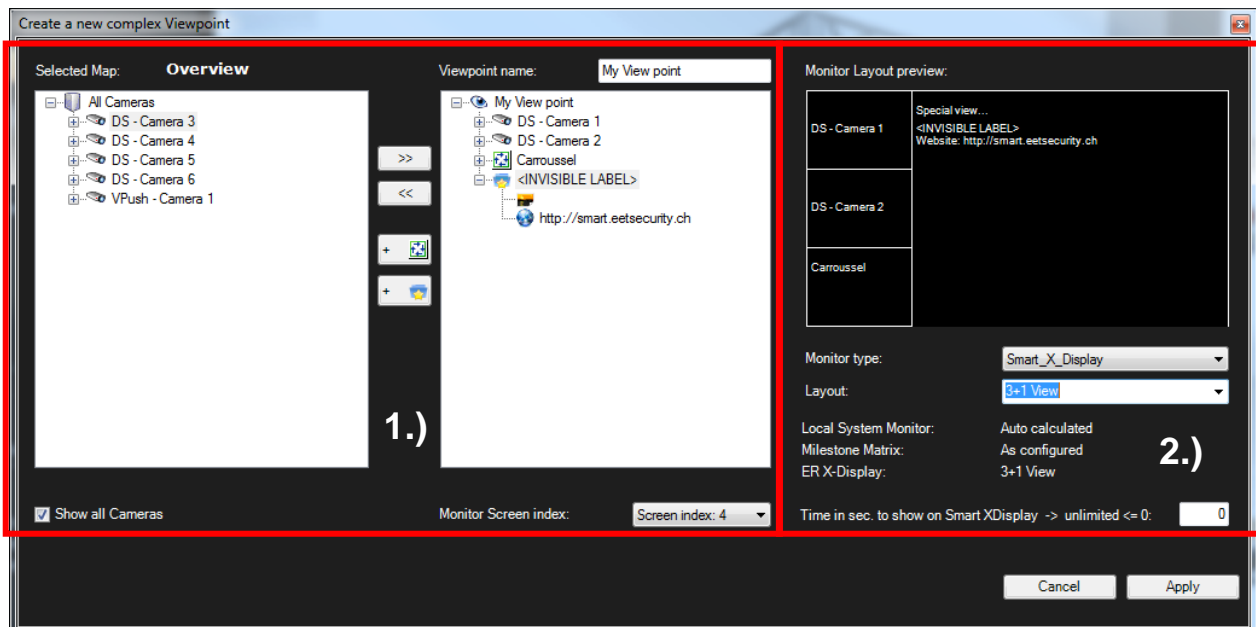
By dragging an item onto the map, there are some helplines visible to get it easier to adjust the items.

After configuring the maps, cameras and outputs on the map, Smart Map can look as follow:



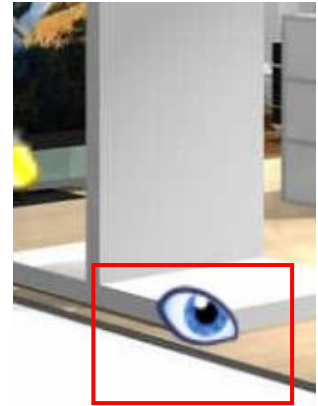
4.1.8 Creating Viewpoints

Using the button **5.)** or the context menu 'Create Complex Viewpoint' different cameras and other view items can be assigned together as a viewpoint. This viewpoint can be placed on the map. TIP: You can also drag and drop Views from the System configuration.



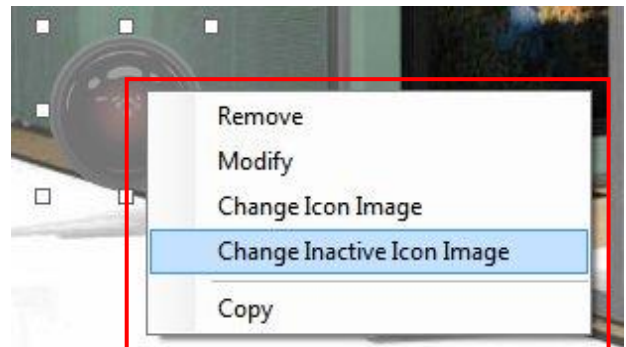
- | | |
|------------|---|
| 1.) | <p>Choose a name for the Viewpoint 'Viewpoint name'.</p> <p>Add the cameras to the viewpoint using '>>'.</p> <p>If the selected camera is a dome, a preset position has to be chosen.</p> <p>There is also the possibility to change the Screen index, which means the position on the Monitor Layout.</p> <p>Click on the "Carroussel" Button to configure a Carroussel View Item in. Carrousels are supported on the Local System Monitors as well as on the X-Display.</p> <p>The "Special view" Button allows you, to configure one of the following View Item:</p> <ul style="list-style-type: none"> - Image and/or Label view (enter the path of the Image from the X-Display point of view) - Empty View Item with black background if the label text is <INVISIBLE LABEL> - Display of a webpage NOTE: Fully supported on the X-Display |
| 2.) | <p>Since Version 2.0 there are a lot of different Layouts for each Monitor type, as well as the auto calculated view Layout ($\sqrt{\text{Camera amount}} \times \sqrt{\text{Camera amount}}$).</p> <p>The current selected layout and its look, is shown in the preview screen at the bottom left side.</p> <p>Switch the Monitor type to check or change the selected Layout.</p> <p>To select a Layout for a specific Monitor type, press the "Select" button.</p> |

The configuration window will be closed by pressing apply and the Viewpoint appears as an eye symbol on the top. He can be adjusted on the map by drag and drop.



In the configuration mode a context menu can be accessed by right click on an icon. This menu can be used to remove icons from the map or in case of alarms or viewpoints it can be used to adjust the configuration. There is also a possibility to change the Icon of the Items.

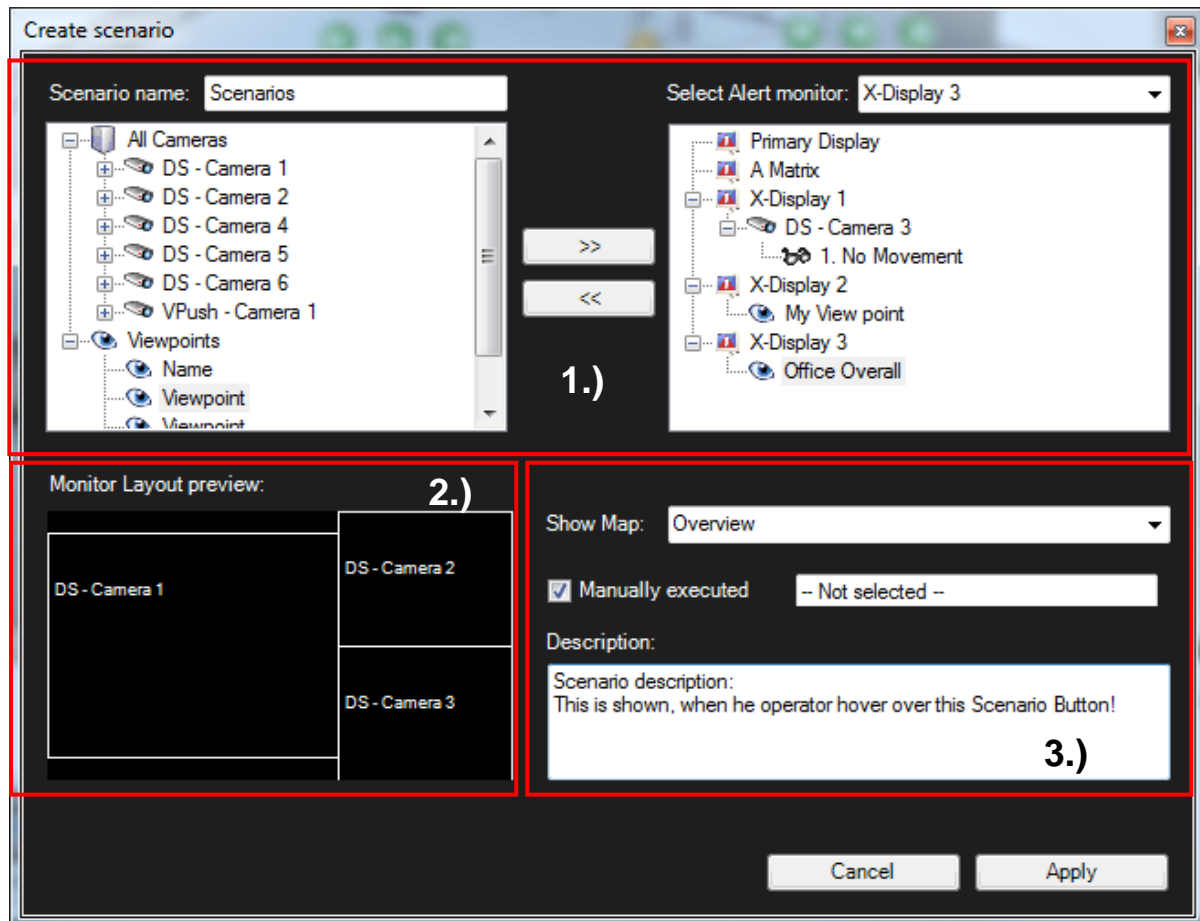
The created Viewpoint, as well as all other items on the map, can be copied to any other Map layer.



4.1.9 Creating Scenarios

A scenario is used to show different Viewpoints/Cameras on several Monitors by one click. The scenarios are collected in the Scenario GUI bar, located on to upper left corner of the Map.

To open the scenario configuration window, press the button **6.)** "Create Scenario":



1.)	Choose a name for the Scenario 'Scenario name'. Add a camera or Viewpoint to the selected Monitor using '>>'. If the selected camera is a dome, a preset position has to be chosen. It can only be added a single Camera or Viewpoint to each Monitor.
2.)	After selecting a Monitor, the preview is automatically shown. The Layout is dependent on the Viewpoint configuration. If the selected Monitor contains a single Camera, this Camera will be shown in full screen.
3.)	→ Select the Map, which should be shown after executing this scenario. → Check, if this Scenario should be executed Manually, on Alarm or both. See also "4.3.2 Create Alarm Views / Alarm Scenarios" → Set the Description for this Scenario. This Description is shown if the Operator hovers over this Scenario button.

4.1.10 Configuration window after completing the setup

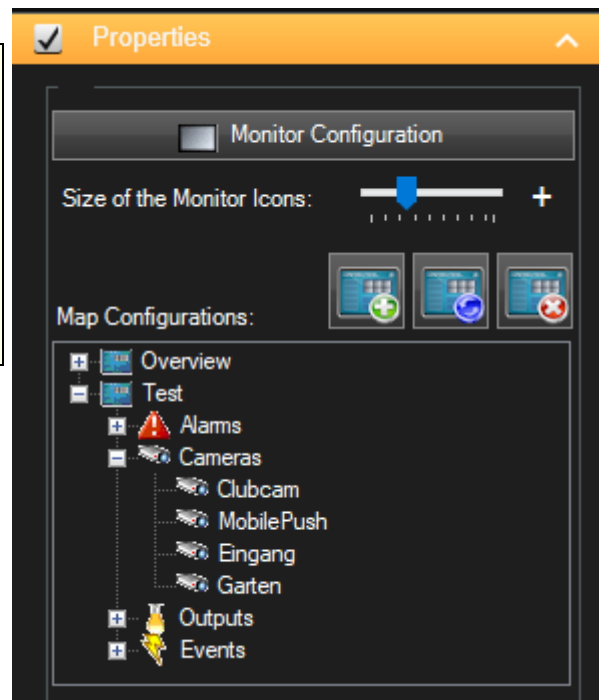
Under **1.)** all Control interfaces and the configured Devices and Events are viewable.

Remark: The ‚Map Configurations‘ is only used as indication. Using the buttons **2.) a, b** and **c** maps can be deleted or reconfigured.

To change existing devices the context menu has to be used. (Right click on the icons to access the context menu).

Proceeding like this, all maps can be configured.

Use the slider to size the Icons on the Maps to your needs.



4.2 Configuration of the Smart Control Room Alarm Plug-In

The following chapter explains the configuration of the Smart Alarm Plug-In. Please note that on all Xprotect® versions the Plug-In is using the Xprotect® Event Server.

4.2.1 Preparing the configuration

Prepare a list with the following information's:

- Name and position of the installed cameras
- Configured Alarm definitions on the Milestone Event Server

Once all the information are available and the time on the PC's are synchronised you can start to configure the system.

Since Smart Control Room Alarm is using the Xprotect® Event Server we should configure the necessary Alarms on the Milestone Administrator Application / Management Client.

Smart Control Room in general will receive Alarms, where the Alarm Sources is one of the following types:

- Manual Event / user defined Event
- Inputs
- Cameras (since Version 6.x) e.g. Motion detection, Video Analytics etc. Event sent by a Camera

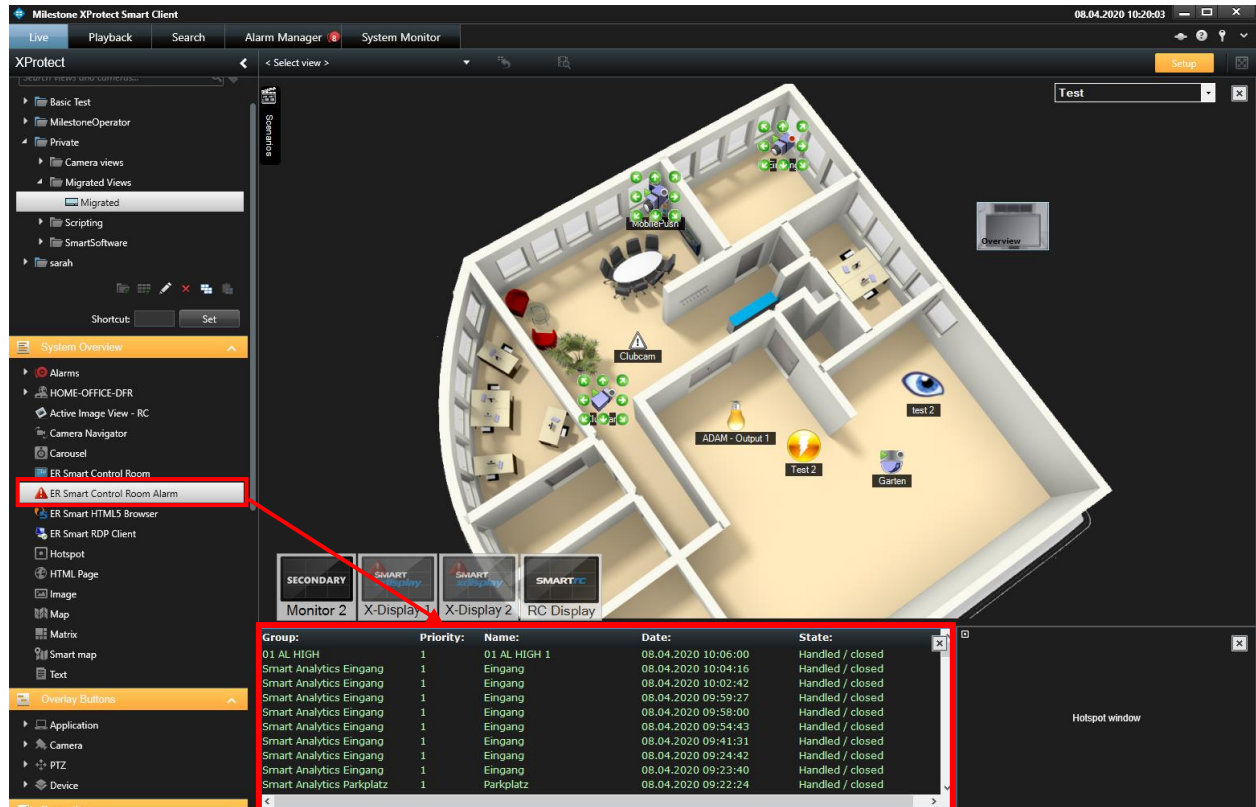
If you use any other source types inside your Alarm definition, the Smart Alarm will not get those Alarms, but you can configure almost any Event Source to trigger an External Event which then is used inside Smart Control Room Alarm.

- Please read the Milestone Manual to get more information about the Alarm definition and its possibilities.

4.2.2 Positioning of the alarm list

Start the Smart Client and log in with Milestone Administration rights. Change to the setup mode. If the Smart Map is already in use this view. If only smart alarm is use any view is possible.

Drag and drop the Smart Alarm from the system overview into the prepared field.



The screenshot shows the Milestone XProtect Smart Client interface. The left sidebar contains a tree view with the following structure:

- Basic Test
- MilestoneOperator
- Private
 - Camera views
 - Migrated Views
 - Migrated
 - Scripting
 - SmartSoftware
 - sarah

The 'System Overview' section is expanded, showing a list of components. The 'ER Smart Control Room Alarm' is highlighted with a red box. A red arrow points from this box to the 'X-Display 1' monitor in the main view.

The main view displays a 3D floor plan of a control room. The 'X-Display 1' monitor is highlighted with a red box. Below the floor plan, there is a table of alarm events.

Group:	Priority:	Name:	Date:	State:
01 AL HIGH	1	01 AL HIGH 1	08.04.2020 10:06:00	Handled / closed
Smart Analytics Eingang	1	Eingang	08.04.2020 10:04:16	Handled / closed
Smart Analytics Eingang	1	Eingang	08.04.2020 10:02:42	Handled / closed
Smart Analytics Eingang	1	Eingang	08.04.2020 09:59:27	Handled / closed
Smart Analytics Eingang	1	Eingang	08.04.2020 09:58:00	Handled / closed
Smart Analytics Eingang	1	Eingang	08.04.2020 09:54:43	Handled / closed
Smart Analytics Eingang	1	Eingang	08.04.2020 09:41:31	Handled / closed
Smart Analytics Eingang	1	Eingang	08.04.2020 09:24:42	Handled / closed
Smart Analytics Eingang	1	Eingang	08.04.2020 09:23:40	Handled / closed
Smart Analytics Parkplatz	1	Parkplatz	08.04.2020 09:22:24	Handled / closed

4.2.3 Configuration window of Smart Alarm



Click into the window to show the operating panel, Smart Control Room Alarm Properties'.

- 1.) Adjust the details for the archived alarms which will be pulled into the alarm list while the smart client starts.
- 2.) Display of the available alarms arranged based on groups.
- 3.) Only Check If the Alarms if you need to disable the Message and/or Video Pop-up Setting for the selected alarm.
- 4.) Interruption of the alarm pulling during setup. It will be automatically deactivated by leaving the Setup Mode.

Remark: All Alarms are activated by default even when they are not checked. You only need to select an Alarm, if you want to change any property. E.g. Disabling Message Pop-up etc.

4.3 Configuration of the interaction of the Plug-Ins

If both Plug-Ins are configured, the Control Room Client interface is used for the alarm monitoring. This enables the use of Multi-Monitor pop-ups.

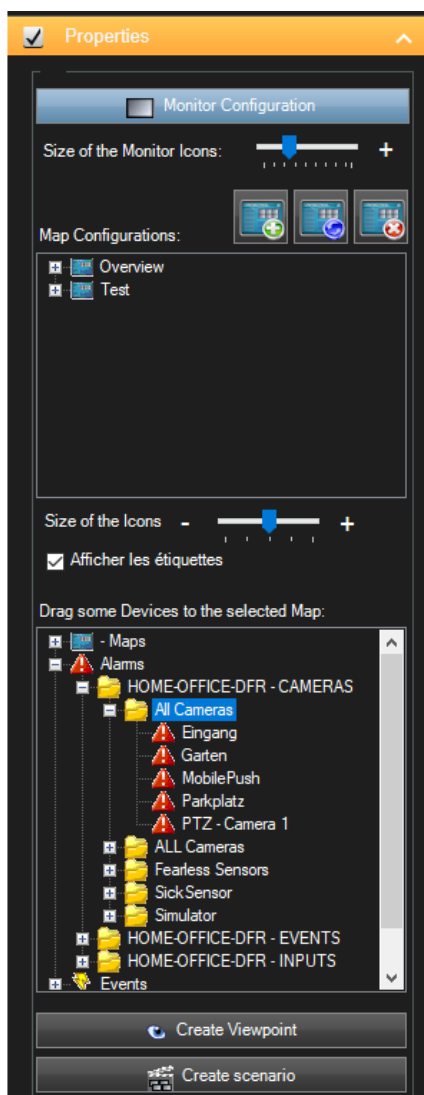
4.3.1 Connect the Alarms to Smart Control Room Client interface

Once Smart Control Room Client and the Alarm are preconfigured both Plug Ins are connected together as follow:

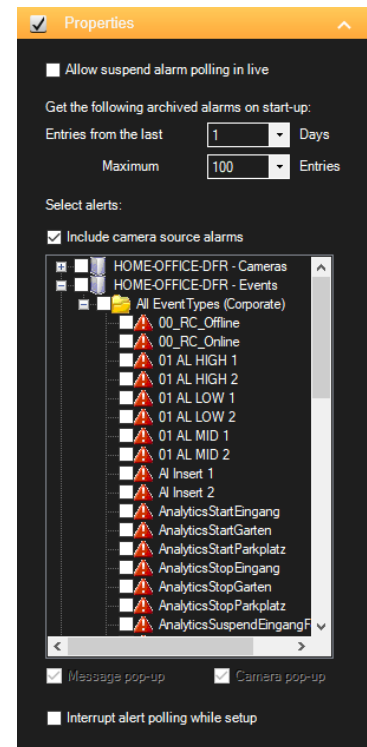
The System automatically recognises if both Plug Ins are installed.

As described above, you don't need to activate all alarms in case of using Xprotect® Event Server. You only should check an alarm, if you want to change a certain Property.

→ Otherwise the standard configuration is used for all alarms!



After configuring the Alarms, click on the Smart Map field to activate the Smart Map Properties.

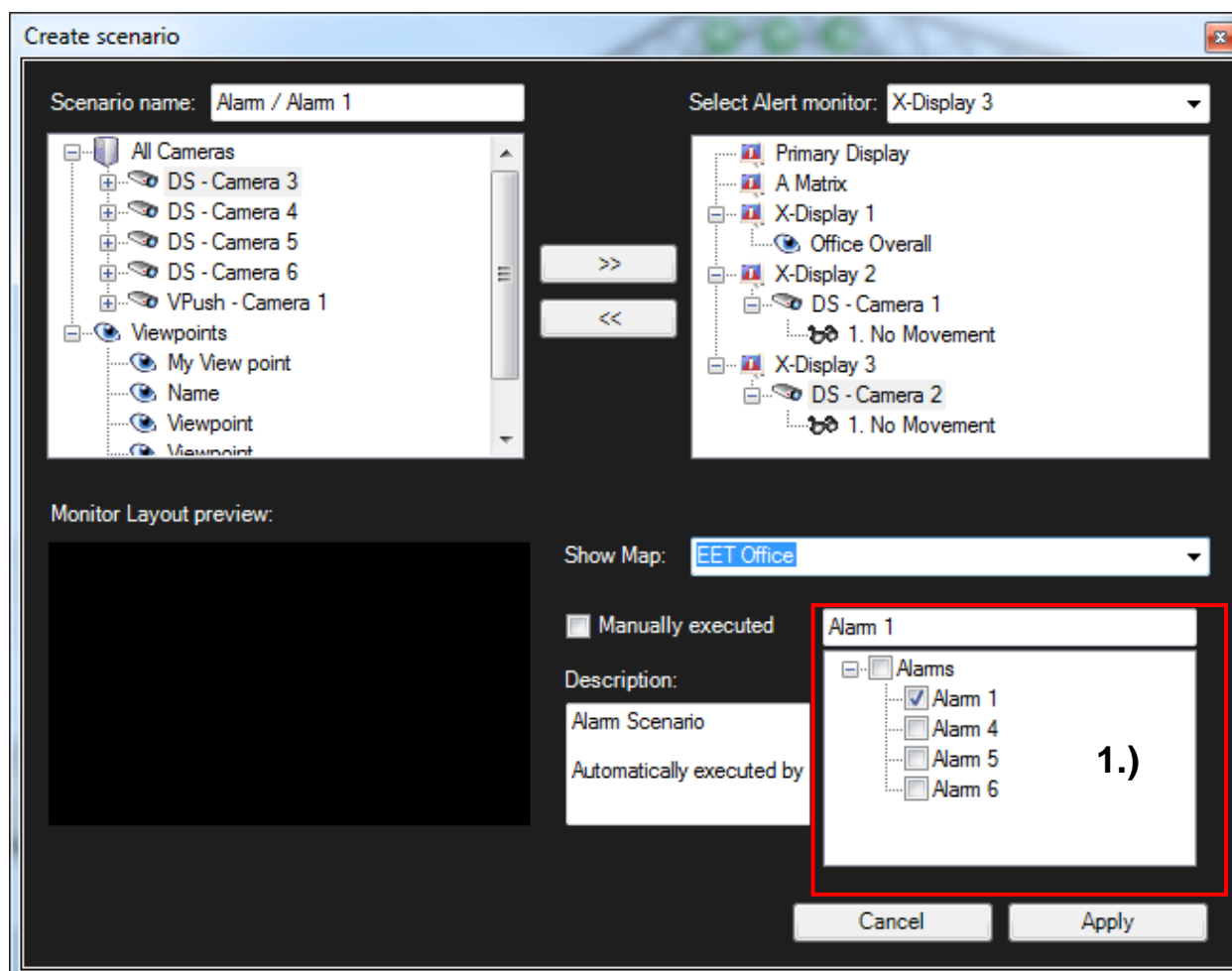


All Manual / user defined, Input Events and Camera Events are listed as Alarm!

Now you can begin to setup the Alarm Views (Alarm Scenario).

4.3.2 Create Alarm Views / Alarm Scenarios

Using drag and drop you can place alarms on the map. As soon as you placed the icon on the map the alarm view configuration window appears automatically. An individual alarm view can be configured for every alarm. All configured cameras and Viewpoints can be used and displayed on the available monitors.

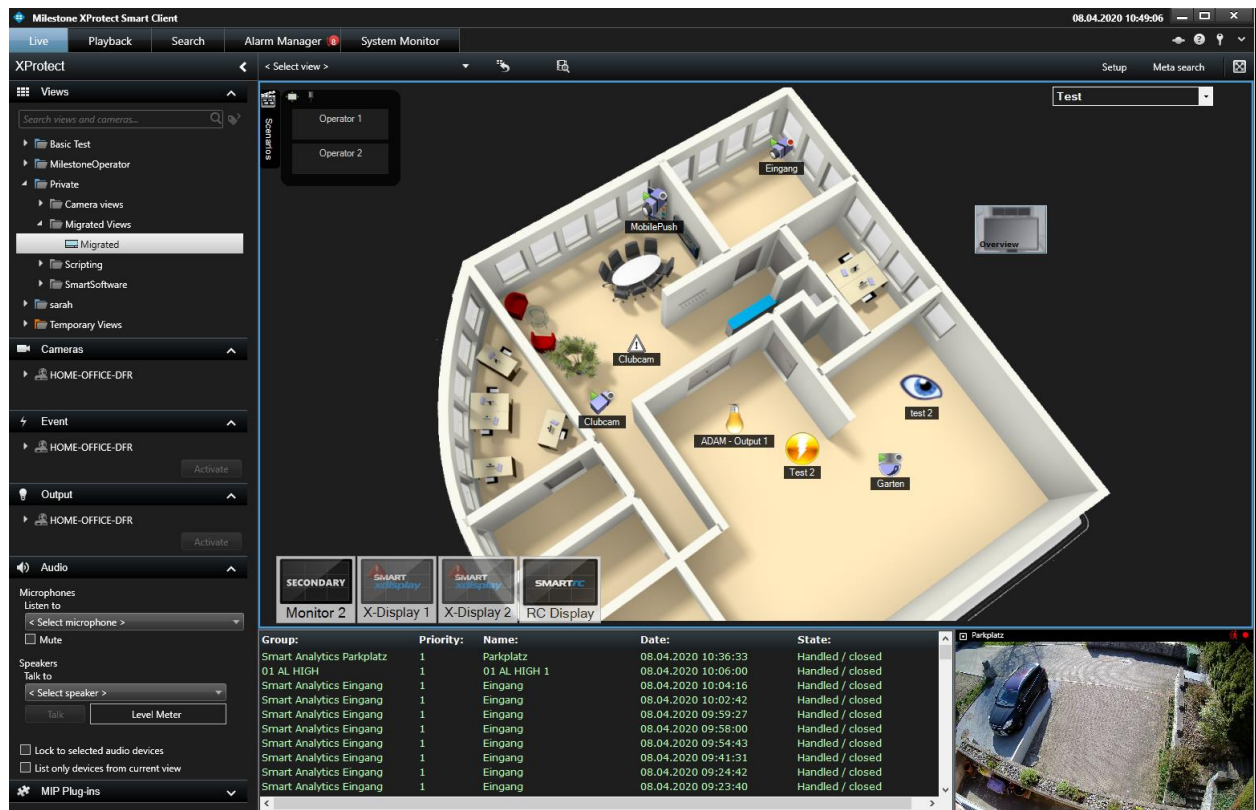


- 1.)** The configuration of the alarm Scenario is similar to the configuration of a Scenario (ref. "4.1.9 Creating Scenarios") except the selection of the Alarm. Checking "Manual executed" makes this Scenario also available on the Scenario GUI bar.

Remark: If the same alarm is configured on different maps the system will inform you, that there is already an alarm view for this alarm. You can now choose to modify it or if you want to use the existing settings.

4.3.3 Finishing the configuration

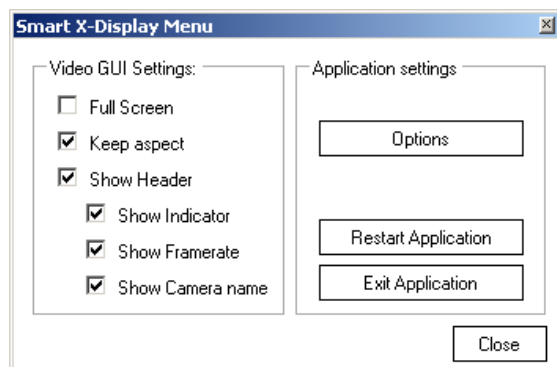
The following image shows the floor plan with configured alarms which are shown as symbols. By right clicking on an alarm (also on the Scenario GUI bar) the context menu appears and both possibilities delete or modify are available. Using delete only deletes the alarm icon on the map. The alarm view will not be deleted and is still active!



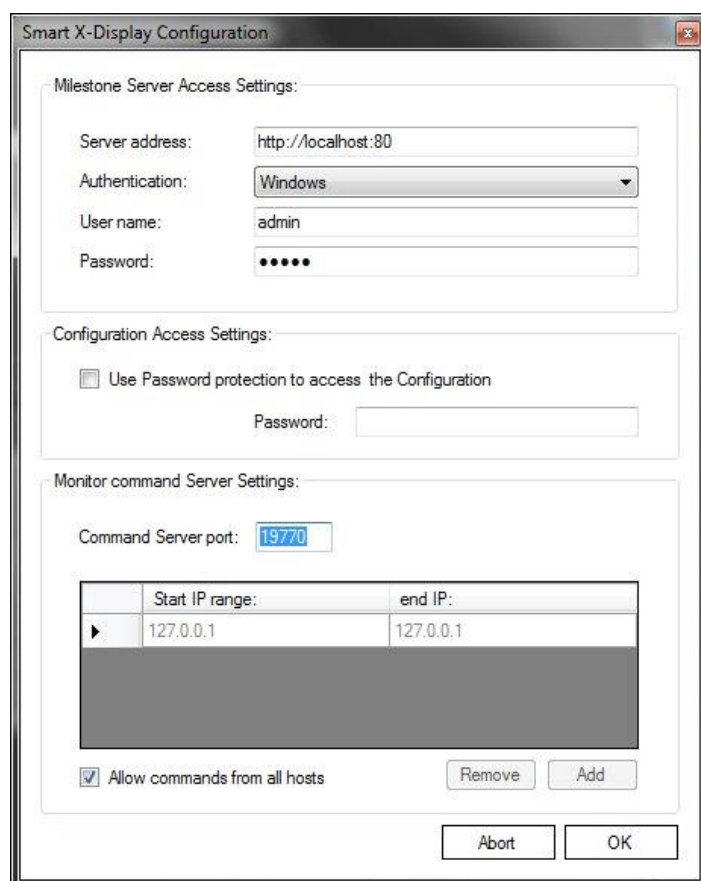
The configuration of the Plug-Ins is now finished. If the view was created in a shared folder, the Background images must be placed under the same path on every client or placed to a shared network path.

4.4 Configuration of the Smart X-Display

After the installation of the Smart X-Display, the Milestone Server connection settings must be done.



After starting the Smart X-Display Application, the context Menu will appear by pressing the right Mouse button on the Windows System Tray Icon. To open the configuration Window for doing the necessary settings, press on the "Configuration" Menu item.



Enter the Connection and Access Settings of your Milestone Surveillance Server.

Activate this function if you want to protect this Configuration Form with a password.

Change the Port on which this Smart X-Display Monitor will receive the commands if necessary.

To authorize a specific Smart Client host, you can add its IP address or range.

If you want to allow all Smart Clients to control this Smart X-Display check the "Allow commands from all hosts" check box.

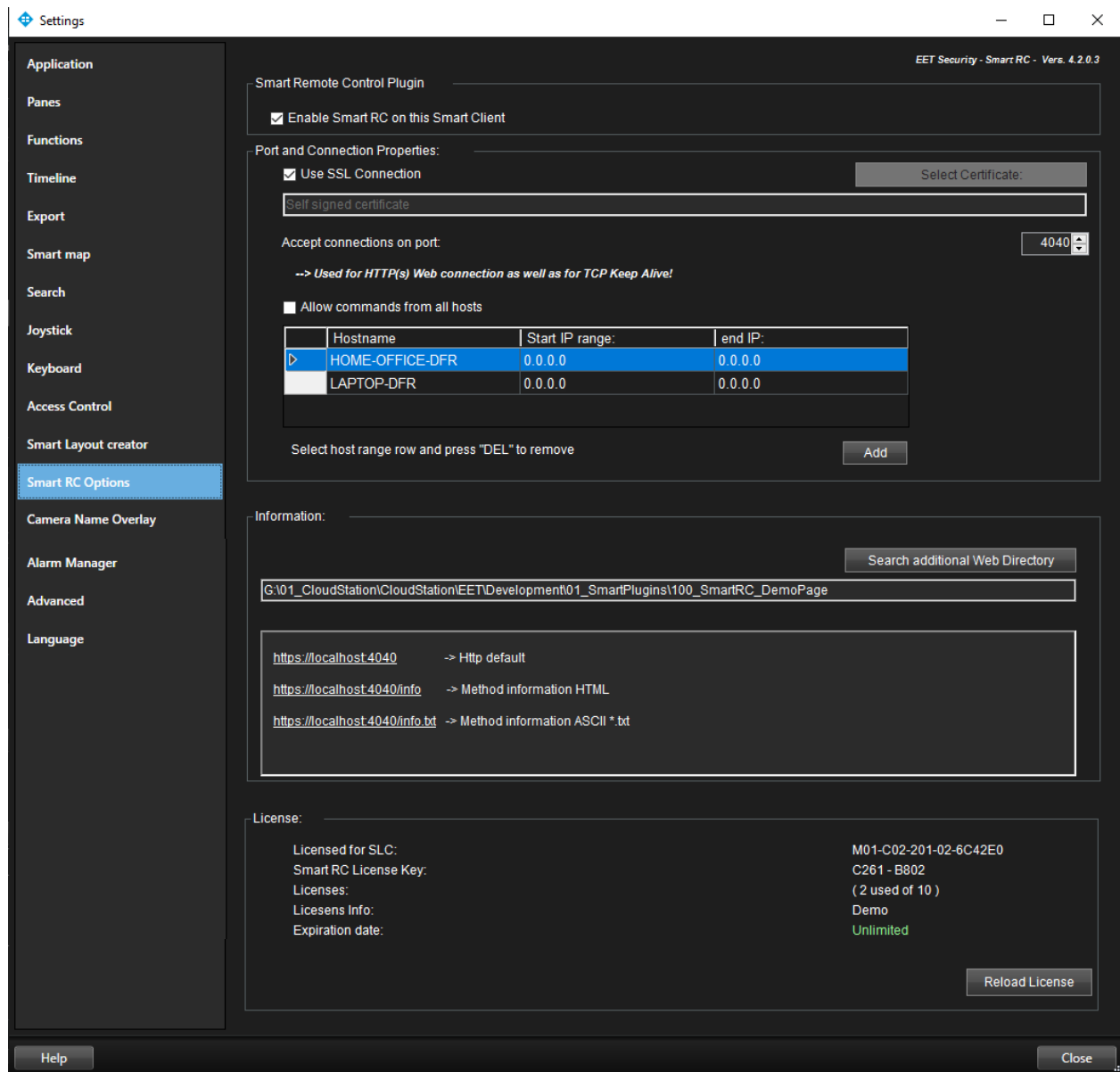
After pressing the "OK" button the Smart X-Display Application will restart and the new settings will be applied.

Remark: Check the messages, shown on the Splash Screen after the restart of the Smart X-Display, if it could connect to the Milestone Video Surveillance Server and get the System Information.

4.5 Configuration of the Smart RC Smart Client Plugin

After the installation of the Smart RC Plugin on the related SmartClient is done, the Port configuration must be done.

Open the Smart Client Options using the context menu on the upper right corner and select the Smart RC Options Window:



5 Configuration migration from Smart Map/Smart Alarm to the Control Room Client Plugin

Since Version 6.0 a complete redesign was made in order to keep the compatibility from XProtect Version 2020R1 and upwards. The following procedure explains how to move the previous configuration into the new Control Room plugins.

5.1 Difference between ER Smart Map, ER Smart Alarm and the new Control Room Client

Generally the Functional Requirements are still the same and except of the introduction of some new Features and a complete technical redesign the plugins work as before. Also the configuration is mostly compatible so you can migrate in just a few steps.

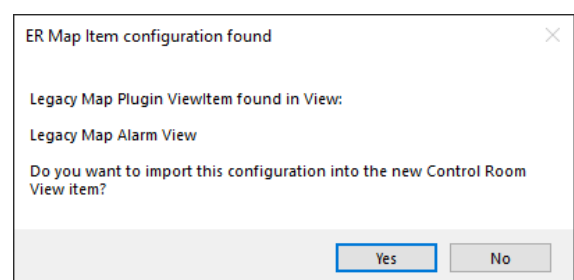
SmartMap / SmartAlarm	Control Room Client
Just before XProtect 2020R1	Xprotect 2019R2 upwards
Using Smart Client Plugin Technology	Using MIP Platform Technology
Two different plugins installed separately	One single plugin for both functions
Worked independently	No standalone Alarm pop-up

5.2 Update Procedure

There are two possibilities to upgrade from the previous plugin version to the new Control Room Client.

Procedure 1: If you install the new Control Room Client Plugins on a System and you create a new View Item of “ER Smart Control Room” or “ER Smart Control Room Alarm” you will be informed that a legacy configuration was found. When you press “yes” the configuration will be applied to the new View.

Please check everything and delete the old View containing the legacy plugins.

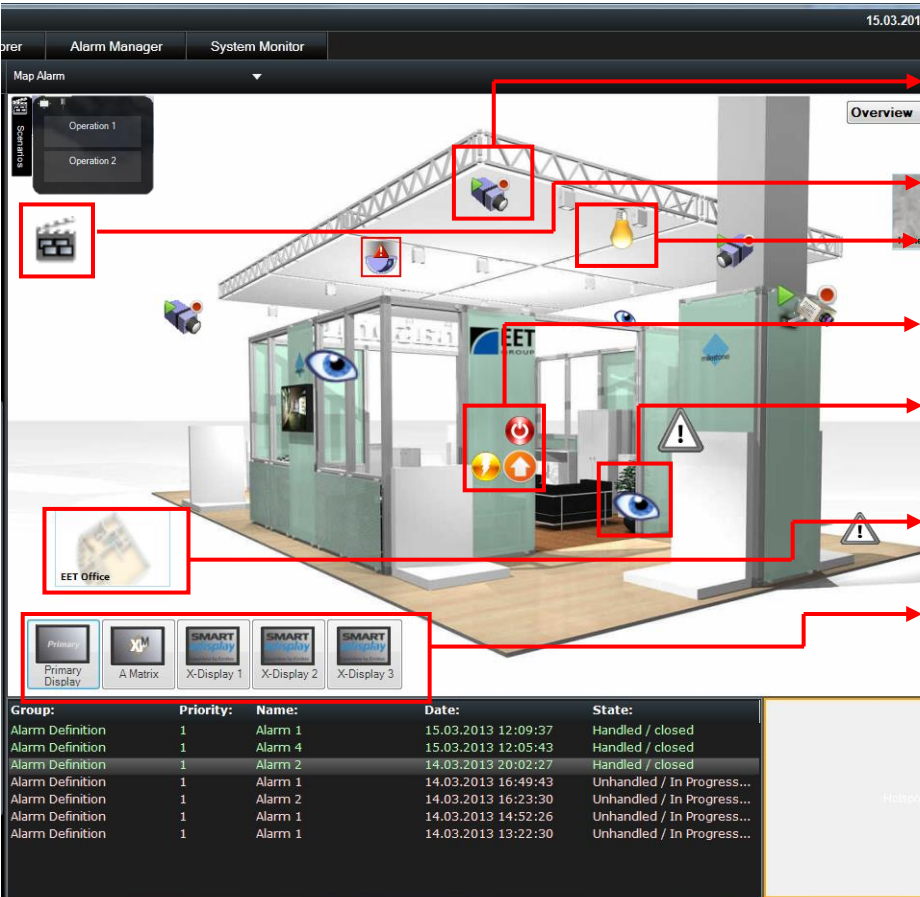


Procedure 2: You can use the “Save Config” function on the legacy View and the “Load Config” on the new Control Room Client plugin. The configuration is upwards compatible.

6 Using the Smart Plug-Ins

6.1 Using Smart Control Room Client

The following screen describes the use of the Smart Control Room Client with a Multiple Monitor system:



Click on a camera to show its live video on the selected Monitor.

Execute Scenarios

Activate output

Activate Manual event

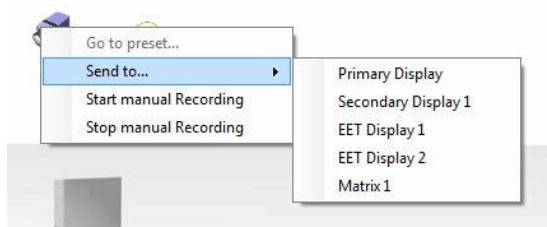
Choose a viewpoint to display a group of cameras.

Change floor plan.

Select Monitor

Group:	Priority:	Name:	Date:	State:
Alarm Definition	1	Alarm 1	15.03.2013 12:09:37	Handled / closed
Alarm Definition	1	Alarm 4	15.03.2013 12:05:43	Handled / closed
Alarm Definition	1	Alarm 2	14.03.2013 20:02:27	Handled / closed
Alarm Definition	1	Alarm 1	14.03.2013 16:49:43	Unhandled / In Progress...
Alarm Definition	1	Alarm 2	14.03.2013 16:23:30	Unhandled / In Progress...
Alarm Definition	1	Alarm 1	14.03.2013 14:52:26	Unhandled / In Progress...
Alarm Definition	1	Alarm 1	14.03.2013 13:22:30	Unhandled / In Progress...

After switch on a camera, it can be controlled using the Hot Spot window. Control it using the PTZ camera control panel or by the click to center function.



Cameras and Viewpoints have a context Menu, which offers the possibility to send this Camera directly to one of the configured Monitors.

There is also a menu item for start and stop manual recording.








The Scenario list can be undocked by clicking on the pin and drag it elsewhere on the Monitor. The Scenario Window is also visible, when the view in the Smart Client was changed. In this way the Scenarios can be executed at any time.



If you double click on the Control content, it will be shown in Full Screen.

6.1.1 Smart Map Status indication using Xprotect® Advanced VMS (C-Code based):


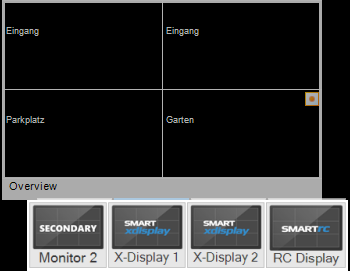
If the status indication is enabled, the following indications will be shown directly on the Map icons. The polling of the status is dependent on its configuration. A value between 2500 ms and 5000 ms will be suitable in the most cases.

	Camera is not connected or has an error. (Please have a look on the "Camera needs attention" section in the Xprotect® Management Client help for detailed information.)
	Camera is started and ready.
	Camera is started, ready and currently in recording modus.
	Camera is started and the manual PTZ session is started. (Please look on the "Manual PTZ session" section in the Xprotect® Management Client help for detailed information.)
	This Output state is currently activated.

6.1.2 Local System Monitors

	<p>Primary System Monitor: Can display single Cameras or Viewpoints with a specific Layout (Smart Client View Layouts).</p>
	<p>Secondary System Monitor: Same functionality as the Primary System Monitor.</p>

6.1.3 Smart X-Display

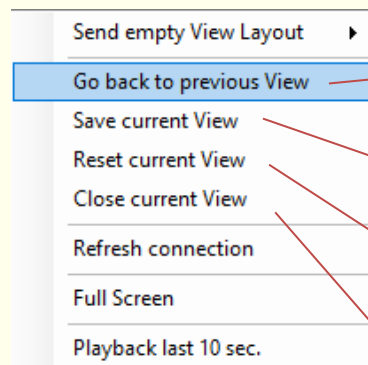
	<p>Smart X-Display: Displays single Cameras or Viewpoints with a specific Layout. With a right Mouse click on it, the Context Menu will be shown. It offers different functions to control the Smart X-Display.</p> <div data-bbox="454 1037 754 1444"> <p>Refresh connection</p> <p>Restart Display</p> <p>Full Screen</p> <p><input checked="" type="checkbox"/> Form Border</p> <p><input checked="" type="checkbox"/> Keep Aspect</p> <p>Playback last 20 sec.</p> <p><input checked="" type="checkbox"/> Show Header</p> <p><input checked="" type="checkbox"/> Show Camera name</p> <p>Show Indicator</p> <p>Show Frame rate</p> </div> <ul style="list-style-type: none"> • Refreshes the connection to the cameras • Restart the Smart X-Display Application • Switch to borderless Full Screen mode • Keep Aspect ratio • Sets all cameras in Playback mode x sec. before • Show Header of each Live video window • Show Indicator (Live, Stopped or Rec sign) • Show the current Frame rate (Diagnose overlay) • Show the Camera name in the Header <p>If you hover over the Monitor you see the actually shown View and its Cameras. If you click on a camera it is set to the Hotspot.</p> <div data-bbox="1066 1496 1439 1803">  </div>
---	---

6.1.4 Smart RC



Smart RC:

Displays single Cameras, Viewpoints or any View with a specific Layout. With a right Mouse click on it, the Context Menu will be shown. It offers different functions to control the Smart RC Monitor:



Choose an empty View Layout and send it

Switch back to the previous shown View

Save the current (Client predefined) View if it was changed by drag and drop




Reset to the (Client predefined) View if it was changed by drag and drop

Close the current Window

If you hover over the Monitor you see the actually show View and its Cameras.



The preview window offers the following functions:

-  Mouse Keyboard control
-  Screenshot mode
-  Size big/small

If you click on a camera it is set to the Hotspot.

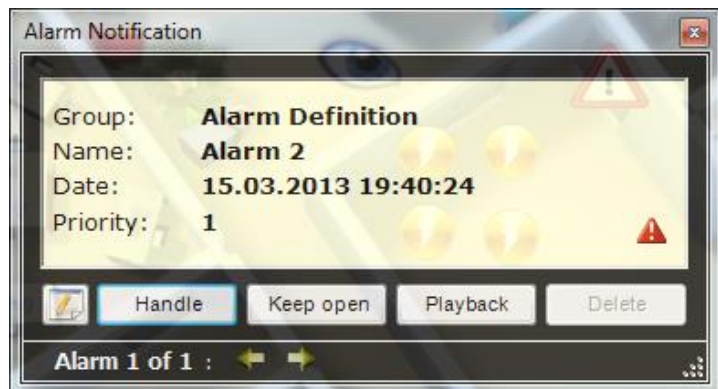
Remark: You can drag and drop Views or Cameras to the Monitor. Also a Camera drag and drop into a preview Field in the layout is possible!

7 Using Smart Control Room Alarm

7.1.1 Alarm Pop- up

With each alarm a popup window with the alarm information's appears if it was not disabled in the configuration. In case of different alarms at the same time the alarm with the highest priority will be displayed. All other alarms will be queued and sorted based on priority and time.

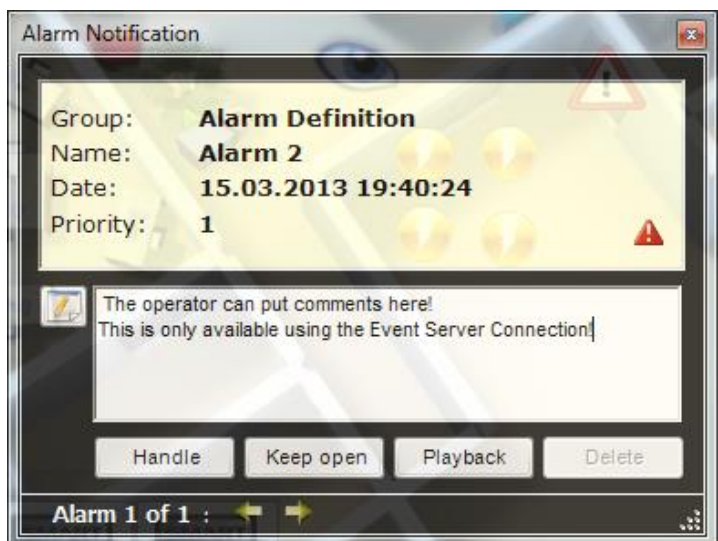
The number of queued alarms is showed at the bottom of the popup window.



With the use of Xprotect® Event Server, it is possible to add comments.

By clicking the "Comment" Button, the Text input field is visible.

This comment is stored on the Milestone Xprotect® Event Server and is visible on the Alarm History using the Milestone Alarm Manager Plugin.



The Operator has different options:

<i>Handle</i>	<p>Indicates the alarm in the alarm list as handled and inks it green.</p> <p>The Handling of the Alarm is also stored on the Xprotect® Event Servers Database and transmitted to any Smart Alarm or Milestone Alarm list plugin. The Alarm state is then changed to closed!</p>
<i>Keep Open</i>	<p>Indicates the alarm in the alarm list as unhandled and inks it red. This alarm can be handled later, using the context menu which is available in the alarm list.</p> <p>The Handling of the Alarm is also stored on the Xprotect® Event Servers Database and transmitted to any Smart Alarm or Milestone Alarm list plugin. The Alarm state is then changed to "In Progress"!</p>
<i>Playback</i>	<p>Opens the quick play window which can be used to instantly playback the alarm. The window also offers the possibility to export the DB of the alarm images.</p>
<i>Delete</i>	<p>Not in use since using Xprotect® Event Server</p>
<i>Arrows ← →</i>	<p>Queued alarms can be displayed.</p>

7.1.2 Alarmlist

All alarms are showed in the alarm list.

Group:	Priority:	Name:	Date:	State:
Alarm Definition	1	Alarm 2	Playback in Browse mode Shift+P	:40:24 Unhandled / New
Alarm Definition	1	Alarm 1	Playback Return	:09:37 Handled / closed
Alarm Definition	1	Alarm 4	Handled Shift+H	:05:43 Handled / closed
Alarm Definition	1	Alarm 2	Unhandled Shift+U	:02:27 Handled / closed
Alarm Definition	1	Alarm 1	Add Comment Shift+N	:49:43 Unhandled / In Progress...
Alarm Definition	1	Alarm 2	Delete Shift+Delete	:23:30 Unhandled / In Progress...
Alarm Definition	1	Alarm 1	Suspend Alarm polling Shift+S	:52:26 Unhandled / In Progress...
Alarm Definition	1	Alarm 1		:22:30 Unhandled / In Progress...

By right clicking on an alarm entry the context menu is shown and all alarm handling functions are available (the same as in the popup).

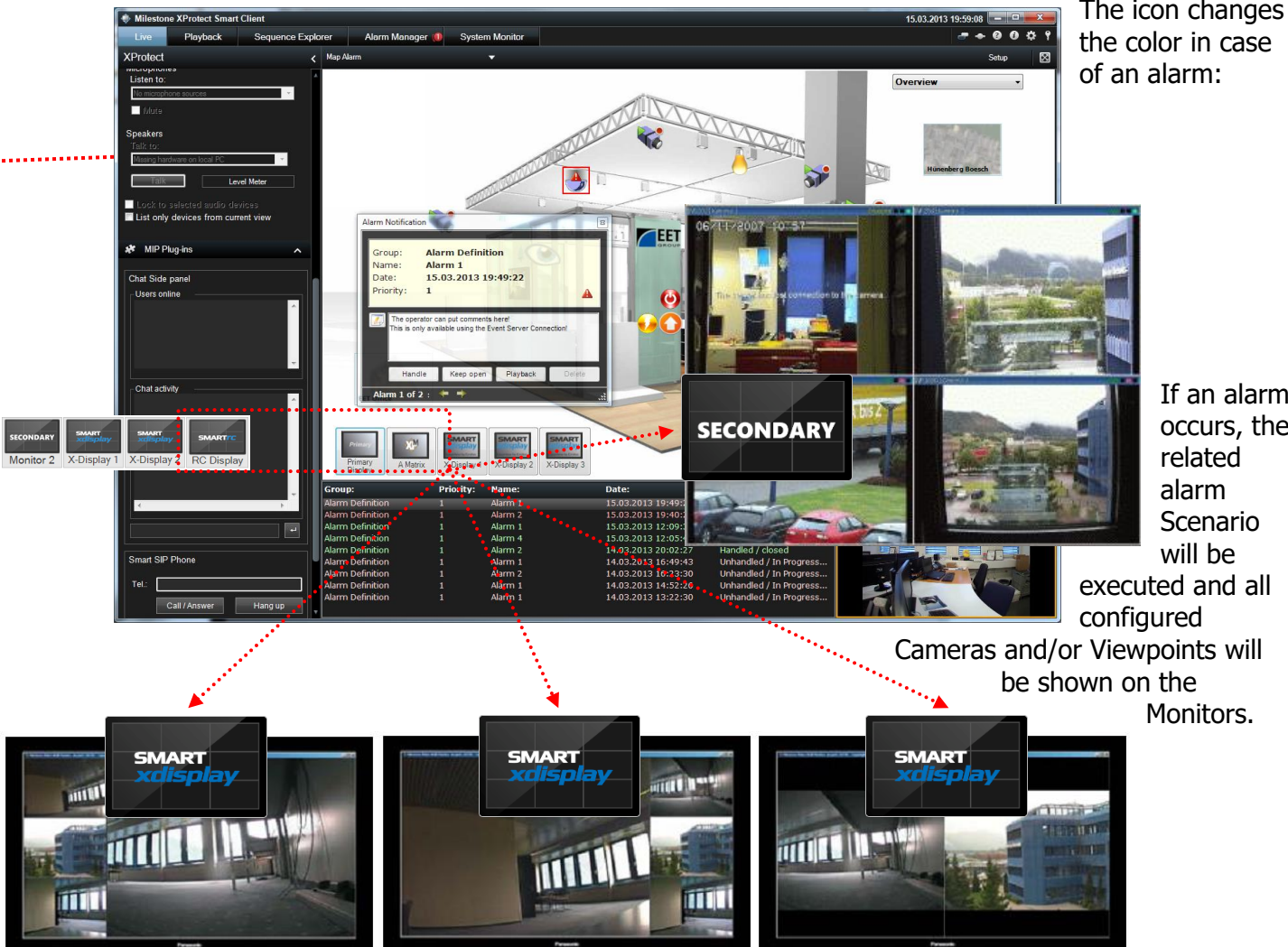
There is also the possibility to use shortcuts to handle single or multiple alarms:

Handle	SHIFT+h ➔ Set the state of the selected Alarm to handled / closed	CTRL+SHIFT+h ➔ Sets the state of all Alarms of the selected Alarm type to handled / closed
Keep Open	SHIFT+u ➔ Set the state of the selected Alarm to unhandled / In progress	CTRL+SHIFT+u ➔ Sets the state of all Alarms of the selected Alarm type to unhandled / In progress
Notification	SHIFT+n ➔ This will open the Alarm Notification Form to enter a new comment.	

The playback of alarm clips will be explained in the next chapter. Please note that multi camera playback is only possible by using Smart Alarm and Smart Map in the Control Room Setup together.

7.1.3 Multiple Camera and Monitor Alarm Scenario

The icon changes the color in case of an alarm:



SECONDARY

Alarm Notification

Group: Alarm Definition
Name: Alarm 1
Date: 15.03.2013 19:49:22
Priority: 1

The operator can put comments here!
This is only available using the Event Server Connection!

Handle Keep open Playback Delete

Alarm 1 of 2 :

Group	Priority	Name	Date
Alarm Definition	1	Alarm 1	15.03.2013 19:49:22
Alarm Definition	1	Alarm 2	15.03.2013 19:40:30
Alarm Definition	1	Alarm 1	15.03.2013 12:09:30
Alarm Definition	1	Alarm 4	15.03.2013 12:05:30
Alarm Definition	1	Alarm 2	14.03.2013 20:02:27
Alarm Definition	1	Alarm 1	14.03.2013 16:40:43
Alarm Definition	1	Alarm 2	14.03.2013 16:23:30
Alarm Definition	1	Alarm 1	14.03.2013 14:52:26
Alarm Definition	1	Alarm 1	14.03.2013 13:22:30

Handled / closed
Unhandled / In Progress...
Unhandled / In Progress...
Unhandled / In Progress...

Cameras and/or Viewpoints will be shown on the Monitors.

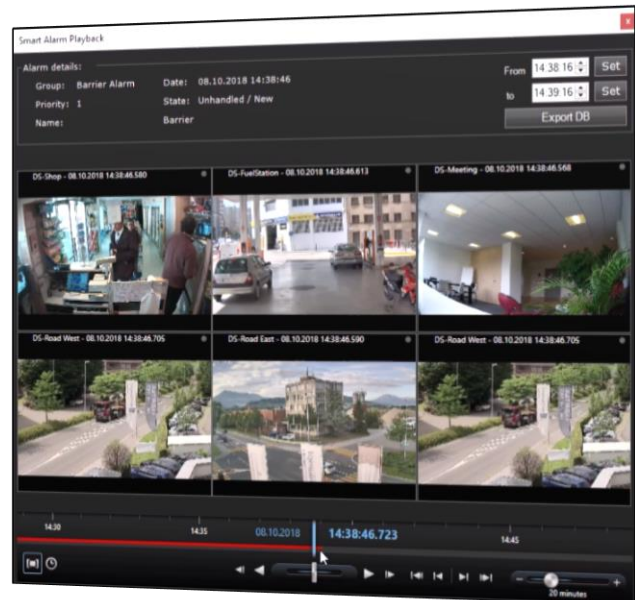
Remark: After handling the alarms the views will be closed and the cameras previously showed will be switched on again.

7.1.4 Direct playback of alarm clips / Playback Window

The alarm popup and the alarm list offer the function to directly playback alarm video clips. The following image shows the playback window and the functions:

To control the playback the same elements which the Smart Clients offers are used. The alarm information's are showed in detail

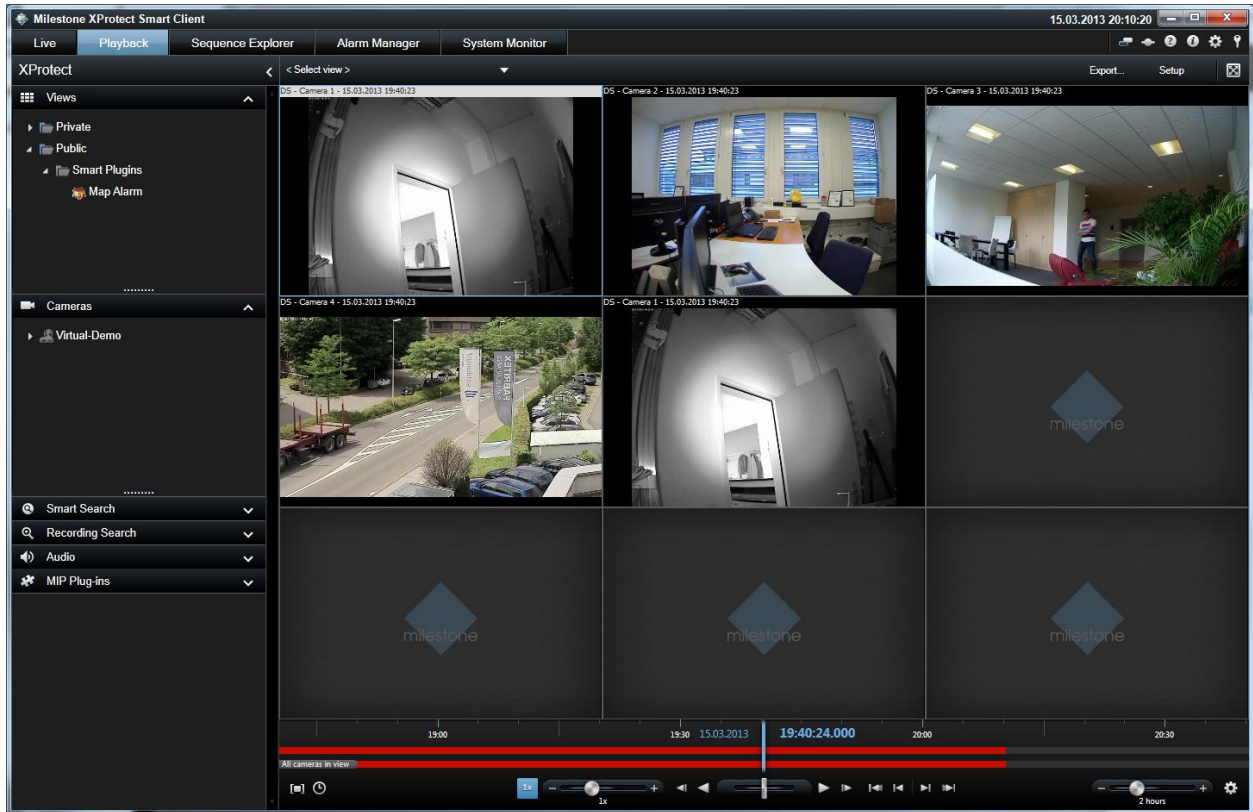
The Alarm clip of the active camera can be exported by a single mouse click on the 'Export DB' button. A pre-alarm and post alarm time of 10 seconds is pre-adjusted. If a longer sequence is needed, there is a possibility to adjust the exact time using the specific fields, or set them directly during playback.



Remark: If there is no scenario created for the Alarm, a Message will be shown, that it a Playback is not possible.

7.1.5 Direct playback of alarm clips / Smart Client Browse Mode

Since Version 2.0, there is the possibility to switch directly from the Alarm list to the Browse Mode for the playback of the configured alarm cameras.



Smart Alarm switches automatically to the Browse Mode and creates a view, which contains all related alarm cameras.

The Time in the Navigation tab will automatically set to the alarm time. Now you can Browse your Playback as usual.

Contact:

EET (Schweiz) GmbH
Bösch 108
CH-6331 Hünenberg
Switzerland
Phone: +41 41 785 13 13

Mail: df@smartsoftware.shop
Web: <https://smartsoftware.shop>