



SMART*toolbox*

Manual

Smart RDP View Item

(Windows Remote Desktop)

1	General Information	2
2	Installation	2
3	Using the Smart RDP View Item.....	3
3.1	Create a new View containing a RDP View Item	3
3.2	Use the Remote Desktop Session in the View.....	4

1 General Information

MIP (Milestone Integration Platform) plugins and applications are dynamically loaded from the Milestone applications and services, which allows a simple installation and use.

The Smart Layout Creator is part of the Smart Toolbox suite, which is running on the Smart Client.

2 Installation

The installation of the all Toolbox Plug-ins are described in the Toolbox Installation Document which is valid for all the Plugins inside the Toolbox.

Please note, that the Smart RDP View Item is running on the Smart Client and needs the two Step installation:

→ Server Side Installation

→ Download from Download Manager and Client Side Installation

After the Client Side installation, the Smart RDP View Item is ready for use in the Smart Client.

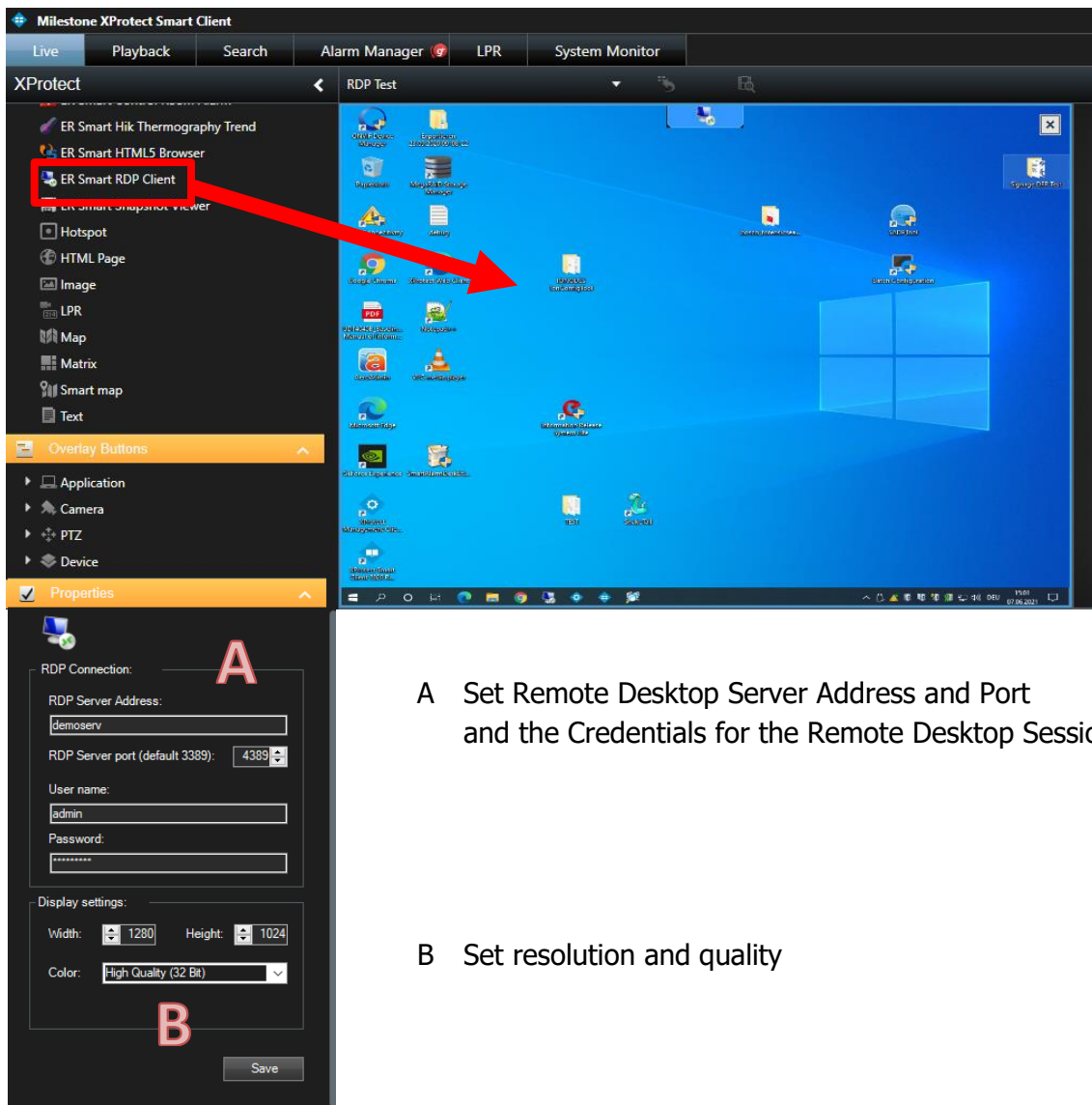
3 Using the Smart RDP View Item

The Smart RDP (Windows Remote Desktop) View item can be used to directly connect to another PC using a Remote Desktop Connection. This can be useful in many different Scenarios.

You can predefine the Login credential if needed to directly login into the session when the View is loaded. When the View is changed, the remote session is properly closed and the user is logged out.

3.1 Create a new View containing a RDP View Item

To create a new View containing a RDP Session, you can just drag and drop the Smart RDP Content from the left side:



The screenshot shows the Milestone XProtect Smart Client interface. In the left sidebar, the 'ER Smart RDP Client' item is highlighted with a red box and a red arrow pointing to it. Below the screenshot, the configuration window for the 'ER Smart RDP Client' is shown, with two sections labeled A and B.

A Set Remote Desktop Server Address and Port and the Credentials for the Remote Desktop Session

B Set resolution and quality

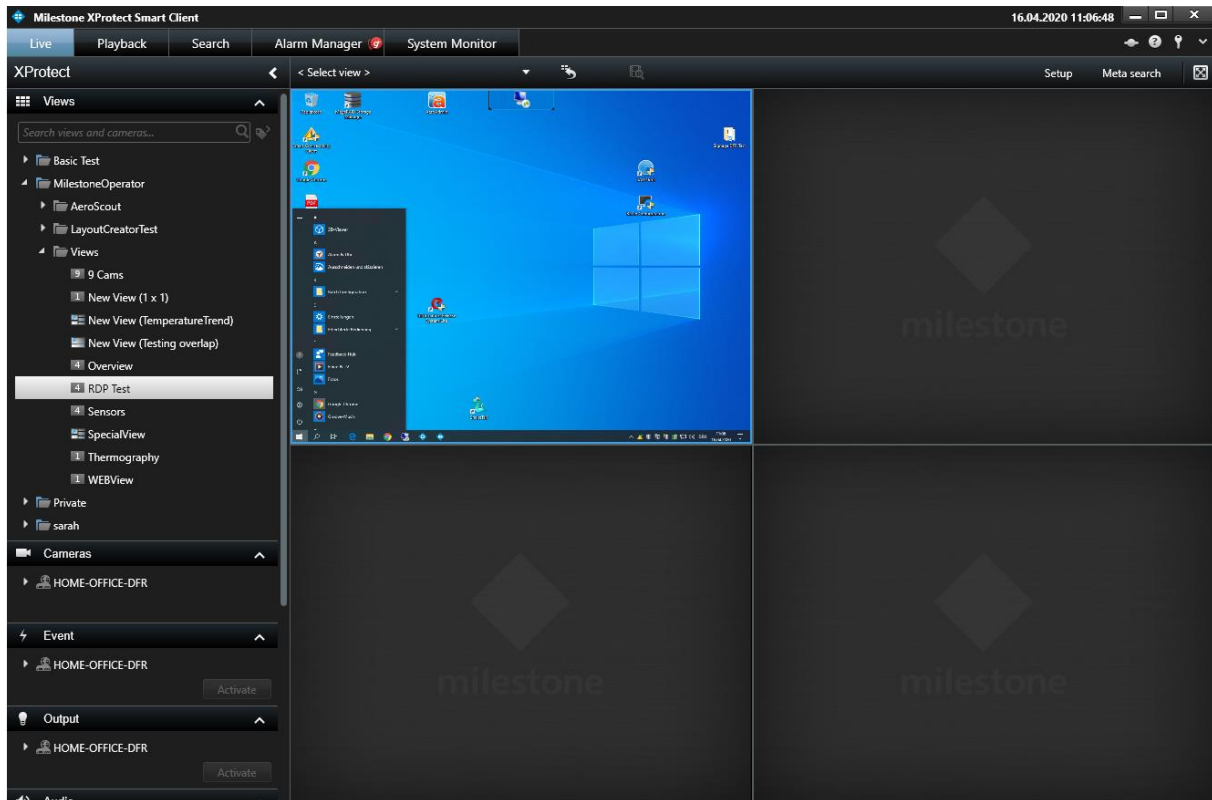
The configuration window includes the following fields:

- RDP Connection:**
 - RDP Server Address:
 - RDP Server port (default 3389):
 - User name:
 - Password:
- Display settings:**
 - Width: Height:
 - Color:

A 'Save' button is located at the bottom right of the configuration window.

3.2 Use the Remote Desktop Session in the View

After the load of the RDP View Item, you can fully Control the remote PC, depending on its settings:



Please note:

Login and Logout is performed when changing Views. RDP Session is dependent on the individual RDP Configuration of the Remote PC.

Contact:

EET (Schweiz) GmbH
Bösch 108
CH-6331 Hünenberg
Switzerland
Phone: +41 41 785 13 13

Mail: security@eetgroup.ch
Web: <https://smart.eetsecurity.ch>