



SMART*toolbox*

Manual

Smart User2Role

1	General Information	2
2	Installation	2
3	Using the Smart Event Sender	3
3.1	Configuration of the Smart Event Sender	3

1 General Information

MIP (Milestone Integration Platform) plugins and applications are dynamically loaded from the Milestone applications and services, which allows a simple installation and use.

The Smart User2Role Plugin is part of the Smart Toolbox suite, which is running on the Event Server and the Management Client. Additionally there is a Smart Client Plugin which is used to reload the configuration if the logged in user was moved from a Role.

2 Installation

The installation of the all Toolbox Plug-ins are described in the Toolbox Installation Document which is valid for all the Plugins inside the Toolbox.

Please note, that the Smart User2Role is running inside the Event Server and the Management Client. It needs the following (optional) two Step installation:

→ Server Side Installation

→ If needed on a separate Management Client, you need to repeat the Server Side Installation on that PC.

→ Download User2Role Client Plugin from Download Manager and do the Client Side Installation

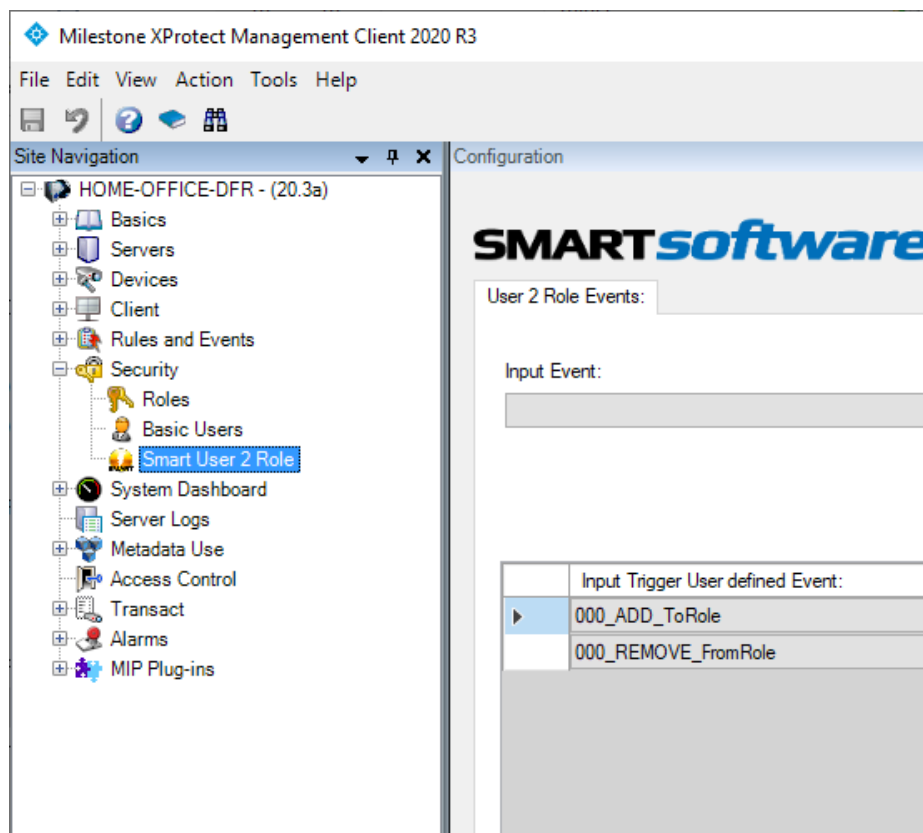
After the Client Side installation, the Smart User2Role is ready for the configuration in the Management Client.

3 Using Smart User2Role

The User2Role Plugin allows dynamic change of user rights triggered by Event. The concept is to add or remove a specific user from Roles.

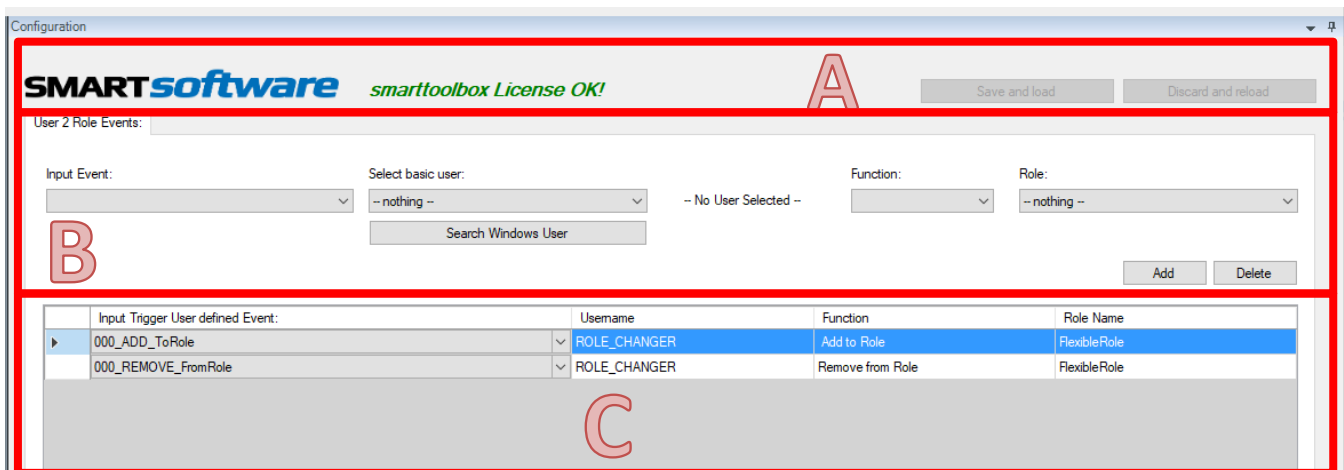
3.1 Configuration of User2Role

After the Installation the Configuration Plugin will be available on the Management Client:



Please note:

If the Smart User2Role Entry is not available in the Management Client, please check if the Server Side Toolbox Plugin with the selected "Smart User2Role" was executed on this PC and the Plugin is inside the root MIPPlugin folder of the Milestone installation path.



Configuration

SMARTsoftware smarttoolbox License OK!

User 2 Role Events:

Input Event: Select basic user: -- No User Selected -- Function: Role:

Input Trigger User defined Event:	Username	Function	Role Name
000_ADD_ToRole	ROLE_CHANGER	Add to Role	FlexibleRole
000_REMOVE_FromRole	ROLE_CHANGER	Remove from Role	FlexibleRole

- A Use the "Save and load" Button whenever you change the Configuration to inform the Event Server about the changes. "Discard and reload" will restore the Configuration to the state before the changes.
- B → Select the Input Event
 → Select basic user or get a Windows user
 → Select the Function [**Add to Role**] or [**Remove from Role**]
 → Select the Role on which to apply the Function
 Select the Command and press "Add Selected".
- C Check and/or directly modify the List.

Please note:

Have a look into the Log files located at

C:\ProgramData\ER.EventServer.SmartUser2Role\DebugLogs

The logs will show all communications and might be useful in case of an issue.

3.2 User2Role Smart Client Plugin

When a User is changed from a Role the Event Server Plugin is sending a Message to the Smart Clients. If the affected user is logged in the Smart Client User2Role Plugin will receive the Message and will enforce a reload of the configuration. This ensures that the new User rights are immediately applied.

The Smart Client Plugin doesn't need any Configuration. It is just running behind without any user interface.

Contact:

EET (Schweiz) GmbH
Bösch 108
CH-6331 Hünenberg
Switzerland
Phone: +41 41 785 13 13

Mail: security@eetgroup.ch
Web: <https://smart.eetsecurity.ch>